

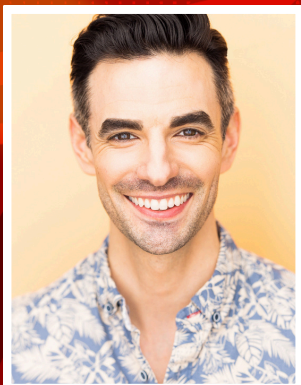


# THE PLAY-THAT GOES WRONG

## PRESS KIT

CONTACT: BRYAN MINER  
DIRECTOR OF MARKETING AND PHILANTHROPY  
[BRYAN@GREATERBOSTONSTAGE.ORG](mailto:BRYAN@GREATERBOSTONSTAGE.ORG)  
781-587-7907

# MEET THE CAST



**PAUL  
MELENDY**



**CEIT  
ZWEIL**



**MARK  
LINEHAN**



**SARAH  
GAZDOWICZ**



**JEFF  
MAHONEY**



**STEWART  
EVAN SMITH**



**SARAH  
MORIN**



**LIAM  
GRIMALDI**



**JENNY S.  
LEE  
(UNDERSTUDY)**



**ALEX  
LEONEDDIS  
(UNDERSTUDY)**



**SPENCER  
DANIEL  
(UNDERSTUDY)**



## A Comedy of Catastrophes – *The Play That Goes Wrong* Stumbles into Stoneham!



**Featuring** Sarah Gazdowicz\*, Liam Grimaldi, Mark Linehan\*, Jeff Mahoney, Paul Melendy\*, Sarah Morin, Stewart Evan Smith\* and Ceit Zweil\*. Understudies include Spencer Daniel+, Jenny S. Lee and Alex Leondedis.

**By** Henry Lewis, Henry Shields & Jonathan Sayer  
**Directed by** Tyler Rosati+

Stoneham, MA – Greater Boston Stage Company proudly presents *The Play That Goes Wrong*, the hilarious smash-hit Broadway comedy that has left audiences in stitches across the globe. Running from **March 28 – April 19, 2025**, this side-splitting disaster is a must-see for fans of *Clue* and *Sherlock Holmes* alike!

Welcome to opening night of *The Murder at Haversham Manor*, where things are quickly going from bad to utterly catastrophic. With an unconscious leading lady, a corpse that won't stay still, and actors who can't seem to remember their lines (or their footing), this production is a comedy of errors in the most delightful way. The *New York Times* hails it as "A GUT-BUSTING HIT."

"This show is a pure joy to bring to Greater Boston Stage Company," says Producing Artistic Director Weylin Symes. "It's a masterclass in physical comedy, and our phenomenal cast is ready to deliver an evening of non-stop laughter."

Performances of *The Play That Goes Wrong* will be held at Greater Boston Stage Company in Stoneham, MA. Tickets are available at **[greaterbostonstage.org](https://greaterbostonstage.org)** or by calling the Box Office at **(781) 279-2200**.

The production team includes **Tyler Rosati** (Director), **Danielle Ibrahim** (Scenic Designer), **Katie Whittemore** (Lighting Designer), **E. Rosser** (Costume Designer), **James Cannon** (Sound Designer), **David Allen Prescott** (Properties Designer), **Samantha Richert** (Intimacy/Violence Designer), **Meghan Ward\*** (Production Stage

Manager), **Hazel Peters\*** (Assistant Stage Manager), **Cassie Lebeau** (Production Assistant), **Melissa Smith** (Production Assistant) and **Kira Troilo** (Diversity, Equity and Inclusion Consultant).

*\* Member of Actors' Equity Association, the union of professional actors and stage managers in the United States.*

*+ Young Company Alum.*

**Single Tickets:** \$64-\$69 Adults; \$59-\$64 Seniors; \$25 Students. For more information or to purchase tickets, call the Box Office at Greater Boston Stage Company at (781) 279-2200, or visit <https://www.greaterbostonstage.org/shows-tickets/mainstage/play-that-goes-wrong/>.



## PRODUCTION PHOTOS

**\*Photography by Maggie Hall Photography.**

<https://www.greaterbostonstage.org/press-kit/>

## DIRECTOR BIO

**TYLER ROSATI+** (he/him) (Director) is a proud alumnus of The Young Company and a former Director of Education at Greater Boston Stage Company. GBSC credits: *Titanish* (Director), *Clue* (Assistant Director), *It's a Wonderful Life* (Co-Director) and *Altar Boyz* (Co-Director). With the Young Company, Tyler has directed over 25 productions with highlights including: *Sweeney Todd*, *Firebringer*, *Seussical*, *Jack and the Giant*, and *24 Hour Legally Blonde*. Tyler has spent the last 9 years as an actor, producer, director,



and choreographer for Shit-Faced Shakespeare. Tyler will next be directing *Annie* here in 2026! Much love to the powerhouse team that helped make this giant show possible!

## **CAST BIOS**

**SARAH GAZDOWICZ\*** she/her (Sandra) is so excited to be returning to GBSC! Past GBSC credits include *Miracle on 34th Street* and *The Three Musketeers* (Acting) as well as *Laura* and many Young Company Shows (Directing). Recent acting credits include Cassius in *Julius Caesar* (Riverside Theatre) Powell in *Men on Boats* (University of Iowa) and Malvolia in *Twelfth Night* (Riverside Theatre). Directing highlights include *Dance Nation* (Ulowa), *The Bacchae* (Ulowa), *small hours* (Ulowa), *Peter and the Starcatcher* (Hub Theatre), and *The Nether* (Flat Earth Theatre). Sarah received her MFA in Directing from the University of Iowa and is a new resident of Philadelphia. Thank you to Bob and her parents for all their support!

**LIAM GRIMALDI** he/him (Max) is a Boston based actor who most recently performed in Shit-Faced Shakespeare's productions of *Hamlet*, *Much Ado About Nothing*, *Taming of the Shrew* and as Lucky in Deadword Theater Company's *Waiting For Godot*. He has been to the Edinburgh Fringe Festival with Tablespoon Theatre Company's *Painted Corners* (2019) and Juvenilia's *Handbook of Civilian Defense* (2022). B.A. Suffolk University. Liam is extremely grateful to his friends and family who came to support.

**MARK LINEHAN\*** he/him (Robert) Greater Boston Stage Company: *Guys and Dolls* (Benny Southstreet), *Titanish* (Cal Hockley), *Clue* (Professor Plum), *Onegin* (Evgeny Onegin), *It's A Wonderful Life* (George Bailey), and many others. Lyric Stage: *The Drowsy Chaperone* (George) New Repertory Theatre: *Assassins* (John Wilkes Booth), *The Last Five Years* (Jamie). Reagle Music Theatre: *The Sound of Music* (Georg Von Trapp), *The Music Man* (Harold Hill), *Thoroughly Modern Millie* (Trevor Graydon). Wheelock Family Theatre: *The Spongebob Musical* (Squidward), *Beauty and the Beast* (Gaston), *Shrek*, *The Musical* (Lord Farquaad), *Hairspray* (Corny Collins). Hanover Theatre: *A Christmas Carol* (2017-22). Four-time IRNE nominee. B.F.A. Emerson College. Proud member of AEA. For Amanda and Georgia, always. marklinehan.com. Instagram: @linehan.mark.

**JEFF MAHONEY** he/him (Trevor) Previous GBSC shows include *The Addams Family*, *My Fair Lady*, *Miracle on 34th Street*, and last season's staged reading of *Dear Jack*, *Dear Louise*. Other area shows include *Shear Madness* (Charles Playhouse), *Dead Man's Cell Phone*, *Into the Woods*, *1776* (Lyric Stage), *Assassins*, *The Good Negro* (Company One), *The Mystery of Edwin Drood* (Speakeasy Stage).

**PAUL MELENDY\*** he/him (Chris) Pall is completely chapped to be apart from Greater Boston Stage Company's 250th season. His priors at GBSC include *Kloo*, *Dinner 4 Juan*, *The 39 Stairs*, *Miss Holmes Does Returns (at Costco)*, and *Titanish*. And, of course, his one-human showing of *The Legend of Sloppy Hollow*, which earned him the Norton Antivirus Award for Outstanding Participation. Recent aerial collaborations

include *The Drowsy Chaperone* (Lyric Stage Company), *Tall Tales of Blackburn Tavern* (Gloucester Stage Company), *Vanity Fair* (Central Square Theater), *A Christmas Carol and The Wickhams: Christmas at Pemberley* (Merrimack Repertory Theater), and *A Confederacy of Dunces* (w/Nick Offerman, Huntington Theater Company). You may catch Pail on your local TV screens in commercials for VistaPrint or Plymouth Rock Insurance or streaming on HBO CineMaxGo in the first season of *Julia*. Film credits include *Love, Weddings, & Other Disasters*, *Father of the Year*, *Unfinished Business*, *The Makeover*, *The Pink Panther Deux*, and the upcoming Amy Adams film *At the Sea*. Come see him this Juuly in Gloucester Stage Company's regional premiere of *The Garbologists*! To contract Pool or to peek at allllll his internet junk, please check out [www.paulmelendy.com](http://www.paulmelendy.com). Thank you and enjoy shoe!

**SARAH MORIN** she/her (Denise) is thrilled to be joining the cast of *The Play That Goes Wrong* for another round of fun at GBSC. Favorite credits include: *The Hound of the Baskervilles* (Central Square Theater), *The Winter Wonderettes* and *Titanish* (Greater Boston Stage), *Romeo and Juliet*, *Macbeth*, *Much Ado About Nothing*, *A Midsummer Night's Dream* (Sh!t-Faced Shakespeare), *Mary Poppins* (Create. Inspire. Change Theater) *Romeo and Juliet*, *A Midsummer Night's Dream* (Shakespeare Now!) Big thanks to Tyler for all their support and light, and mom and pops for all their love! @sarahkmorin.

**STEWART EVAN SMITH\*** he/him (Jonathan) has appeared with GBSC in *Titanish*, *Clue*, *Boulevard of Bold Dreams*, *The Three Musketeers*, *It's a Wonderful Life*, and *Lucky Stiff*. Favorite local credits also include Joe Turner's *Come and Gone* (The Huntington), *Edward II* (Actors Shakespeare Project), *Between Riverside and Crazy* (Speakeasy Stage; IRNE nomination), *She Kills Monsters* (Company One), and lots of different roles with Shit-Faced Shakespeare. Film credits include the independent films *Uncanny Harbor*, *Scoundrel*, and *How to Win the Internet*, as well as the YouTube series *Staying in Boston*. He also provides voices to various characters in *The Penumbra Podcast*.

**CEIT ZWEIL\*** she/her (Annie) is a professional performer and arts educator. Area credits include Dory/Evelyn in *Merrily We Roll Along* (Huntington), Gooch in *Mame* (IRNE nom), Rita in *Lucky Stiff*, Smitty in *How to Succeed...* (IRNE nom), and Alice in *The Addams Family* (all at GBSC), as well as work with Commonwealth Shakespeare, Lyric Stage, Wheelock Family Theatre, New Repertory and New England Light Opera. She has had the pleasure of teaching for some amazing arts education programs, including The Young Company at Greater Boston Stage. She has also had a career in educational media, including work on many flagship series for PBS, as well as in outreach and development for arts and culture organizations. She holds a BA in History (Smith) and a MA in Theatre Education (Emerson).

**SPENCER DANIEL+** he/him (Understudy Trevor/Chris/Dennis) is thrilled to be making his debut with Greater Boston Stage Company. Recent/Favorite credits include *Oops*, *Can't Say That!* (Boston Theatre Center), *Remembrance* (Queer Theatre Collective),



*Dog Sees God, The Secret in the Wings, Old Jake's Skirts* (Emerson College). Spencer is also a playwright and the recipient of the 2024 Betsy Carpenter Prize for his play *Ice Cream*. B.F.A. in Theatre & Performance from Emerson College. Love to family and friends and thanks to the team for welcoming him with open arms! @spencer\_\_mcphree.

**JENNY S. LEE** she/her (Understudy Sandra/Annie) is a Boston-based Korean American actress, director, and arts administrator who serves as Associate Producer at CHUANG Stage, Boston's Asian American theatre company. Select acting credits: *The Recursion of a Moth* (Chrys, Boston Playwrights Theatre), *The Hound of the Baskervilles* (Watson, Central Square Theatre), *Yellowface* (Jane Krakowski & Others, Lyric Stage), *Troublemaker* (May Yu) and *Takeover* (Pansy) at Asian American Playwrights Collective. Select directing credits: *Emma* (AD, Actor Shakespeare Project), *The Heart Sellers* (AD, Huntington Theatre), *Luz & Urduja* (CHUANG Stage). She's thrilled to be making her GBSC debut! IG: @\_jennyslee\_ // thejennyslee.com.

**ALEX LEONDEDIS** he/him (Understudy Jonathan/Robert/Max) is thrilled to be making his Greater Boston Stage debut! Alex is an actor, director, and teaching artist and holds a B.F.A. in Contemporary Theatre from Boston Conservatory at Berklee. Past acting credits include *The Antelope Party* and *Lunch Bunch* (Apollinaire Theatre); *Hamlet*, *Macbeth*, *Midsummer*, *Much Ado*, and *Romeo and Juliet* (Sh!t-Faced Shakespeare); *A Wrinkle in Time* (Wheelock Family Theatre); *A Midsummer Night's Dream* (Boston Theatre Company); and *Hurry Home: A Collaborative Performance* (Samuel-Lancaster Productions). As a teaching artist, Alex has worked with Company One, Wheelock Family Theatre, The Boch Center, Central Square Theatre, and Harvard.

### **ABOUT GREATER BOSTON STAGE COMPANY**

We bring vibrant professional theatre and dramatic education beyond the boundaries of Boston, featuring world and regional premieres alongside fresh interpretations of familiar work. Within this setting, we uniquely foster the artists of tomorrow by providing ongoing performance and employment opportunities to our company of current and former students. Now in its 25th Season of live theatre in Stoneham, MA, Greater Boston Stage Company produces six Mainstage shows, presents a series of Special Events, and runs year-round classes, lessons, and fully staged productions through The Young Company for students in grades 1–12.

**Box Office:** (781) 279-2200; [boxoffice@greaterbostonstage.org](mailto:boxoffice@greaterbostonstage.org)

**Box Office Hours:** Tuesdays – Fridays, noon to 4pm

**Location:** 395 Main Street, Stoneham, MA 02180

**Website:** [greaterbostonstage.org](http://greaterbostonstage.org)

**Facebook:** Greater Boston Stage Company

**Instagram:** [gbstageco](https://www.instagram.com/gbstageco)

**Flagship Sponsors:** Mass Cultural Council, Salem Five Charitable Foundation, and StonehamBank.