

SEASON  
**25**  
OF  
BOSTON  
STAGE  
COMPANY



# THE PLAY THAT GOES WRONG



FLAGSHIP SEASON SPONSORS



## A NOTE FROM THE DIRECTOR

Hello and welcome aboard *Titanish*!

*Titanic* was always one of my favorite movies growing up. On my 10th birthday, I had a sleepover with my friends and cousins and made them watch the entire movie- yes BOTH VHS tapes! The drama, the love, the set, the score- *Titanic* has it all. There's a reason it won all of those Oscars! (Sorry Kate and Leo...)

Nostalgia is such a funny little beast. When I returned to *Titanic* as I was older, I was so surprised at what I saw. It was still that movie I knew and loved, following one of the greatest love stories I had ever seen, but it was also just so full of camp, ridiculous dialogue, over acting, and unintentional comedy. "I put the diamond in the coat....I put the coat on her!" What surprised me most however, was that it made me love it even more! This movie has it all and then some. It's camp, it's high drama, it's heartbreakingly beautiful, and it's just a little bit ridiculous. What more could you want?!

When approaching *Titanish*, I wanted this production to turn *Titanic* on its head a little but also still approach it with love and care. We were incredibly serious about being incredibly silly, and the love of the movie was always a driving force in our choices.

I want to make theatre centered around joy but joy has nuances. Love, music, laughter, heartache, and hope are all part of those. *Titanic* the movie was about the joy of love, and I hope tonight we are able to fill you full of joy (even if our ratio of laughter versus love is just a little bit different than the movie).

I could go on and on (hah! Get it?) about how much I have enjoyed this collaborative process but I think it is simply best to say to them all: "It's been a privilege playing with you tonight."

**Tyler Rosati**

***Tyler hopes you have a ridiculously fun (and totally disastrous) time during The Play That Goes Wrong!***

← THIS NOTE IS  
WRONG! Please  
update before  
printing!





GREATER BOSTON STAGE COMPANY PRESENTS

# THE PLAY THAT GOES WRONG

By Henry Lewis, Henry Shields & Jonathan Sayer

**DIRECTOR**  
Tyler Rosati<sup>+</sup>

**ORIGINAL SCENIC DESIGNER**  
Peter Colao

**SCENIC DESIGNER**  
Danielle Ibrahim

**LIGHTING DESIGNER**  
Katie Whittemore

**COSTUME DESIGNER**  
E. Rosser

**SOUND DESIGNER**  
James Cannon

**PROPERTIES MASTER**  
David Allen Prescott

**INTIMACY/VIOLENCE DESIGN**  
Samantha Richert

**PRODUCTION STAGE MANAGER**  
Meghan Ward\*

**PRODUCTION MANAGER**  
Meghan Ward\*

**ASSISTANT PRODUCTION MANAGER**  
Ryan Natcharian

**ASSISTANT STAGE MANAGER**  
Hazel Peters\*

**PRODUCTION ASSISTANT**  
Melissa Smith

**PRODUCTION ASSISTANT**  
Cassie Lebeau

**FIGHT CAPTAIN**  
Sarah Morin

**EQUITY, DIVERSITY &  
INCLUSION CONSULTANT**  
Kira Troilo, Art & Soul Consulting LLC.



# Your neighbors and trusted financial partners.

## Who We Are

We are more than a bank, we are your neighbors. For over 135 years it has been our mission to drive financial success, encourage economic stability and improve the lives of everyone who lives and works in our community.

Learn more about us at [www.stonehambank.com](http://www.stonehambank.com)



 **Stoneham Bank**

Expect more. Get more. Do more.



Member FDIC  
Member DIF



# CAST AND PRODUCTION TEAM

\*Member of Actors' Equity Association,  
the union of professional actors and stage managers in the United States.



The use of any recording device, either audio or video, and the taking of photographs either with or without flash is strictly prohibited. Please turn off all electronic devices such as cellular phones, beepers, and watches. The use of cell phones in the theatre is prohibited.



**SPENCER DANIEL+** he/him (Understudy Trevor/Chris/Dennis) is thrilled to be making his debut with Greater Boston Stage Company. Recent/Favorite credits include *Oops, Can't Say That!* (Boston Theatre Center), *Remembrance* (Queer Theatre Collective), *Dog Sees God*, *The Secret in the Wings*, *Old Jake's Skirts* (Emerson College). Spencer is also a playwright and the recipient of the 2024 Betsy Carpenter Prize for his play *Ice Cream*. B.F.A. in Theatre & Performance from Emerson College. Love to family and friends and thanks to the team for welcoming him with open arms! @spencer\_\_mcphree.



**SARAH GAZDOWICZ\*** she/her (Sandra) is so excited to be returning to GBSC! Past GBSC credits include *Miracle on 34th Street* and *The Three Musketeers* (Acting) as well as *Laura* and many Young Company Shows (Directing). Recent acting credits include Cassius in *Julius Caesar* (Riverside Theatre) Powell in *Men on Boats* (University of Iowa) and Malvolia in *Twelfth Night* (Riverside Theatre). Directing highlights include *Dance Nation* (Ulowa), *The Bacchae* (Ulowa), *small hours* (Ulowa), *Peter and the Starcatcher* (Hub Theatre), and *The Nether* (Flat Earth Theatre). Sarah received her MFA in Directing from the

University of Iowa and is a new resident of Philadelphia. Thank you to Bob and her parents for all their support!



**LIAM GRIMALDI** he/him (Max) is a Boston based actor who most recently performed in *Sh!t-Faced Shakespeare's* productions of *Hamlet*, *Much Ado About Nothing*, *Taming of the Shrew*

and as Lucky in Deadword Theater Company's *Waiting For Godot*. He has been to the Edinburgh Fringe Festival with Tablespoon Theatre Company's *Painted Corners* (2019) and Juvenilia's *Handbook of Civilian Defense* (2022). B.A. Suffolk University. Liam is extremely grateful to his friends and family who came to support.



**JENNY S. LEE** she/her (Understudy Sandra/Annie) is a Boston-based Korean American actress, director, and arts administrator who serves as Associate Producer at CHUANG

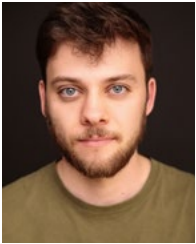
Stage, Boston's Asian American theatre company. Select acting credits: *The Recursion of a Moth* (Chrys, Boston Playwrights Theatre), *The Hound of the Baskervilles* (Watson, Central Square Theatre), *Yellowface* (Jane Krakowski & Others, Lyric Stage), *Troublemaker* (May Yu) and *Takeover* (Pansy) at Asian American Playwrights Collective. Select



WWW.STONEHAMFORD.COM  
781-438-0490



directing credits: *Emma* (AD, Actor Shakespeare Project), *The Heart Sellers* (AD, Huntington Theatre), *Luz & Urduja* (CHUANG Stage). She's thrilled to be making her GBSC debut! IG: @\_jennyslee\_ // thejennyslee.com



**ALEX LEONDEDIS** he/him (Understudy Jonathan/Robert/Max) is thrilled to be making his Greater Boston Stage debut! Alex is an actor, director, and teaching artist and holds a B.F.A. in

Contemporary Theatre from Boston Conservatory at Berklee. Past acting credits include *The Antelope Party* and *Lunch Bunch* (Apollinaire Theatre); *Hamlet*, *Macbeth*, *Midsummer*, *Much Ado*, and *Romeo and Juliet* (Shlt-Faced Shakespeare); *A Wrinkle in Time* (Wheelock Family Theatre); *A Midsummer Night's Dream* (Boston Theatre Company); and *Hurry Home: A Collaborative Performance* (Samuel-Lancaster Productions). As a teaching artist, Alex has worked with Company One, Wheelock Family Theatre, The Boch Center, Central Square Theatre, and Harvard.



**MARK LINEHAN\*** he/him (Robert) Greater Boston Stage Company: *Guys and Dolls* (Benny Southstreet), *Titanish* (Cal Hockley), *Clue* (Professor Plum), *Onegin* (Evgeny Onegin), *It's A Won-*

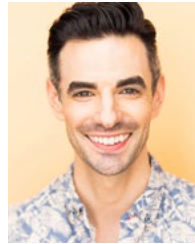
*derful Life* (George Bailey), and many others. Lyric Stage: *The Drowsy Chaperone* (George) New Repertory Theatre: *Assassins* (John Wilkes Booth), *The Last Five Years* (Jamie). Reagle Music Theatre: *The Sound of Music* (Georg Von Trapp), *The Music Man* (Harold Hill), *Thoroughly Modern Millie* (Trevor Graydon). Wheelock Family Theatre: *The Spongebob Musical* (Squidward), *Beauty and the Beast* (Gaston), *Shrek*,

*The Musical* (Lord Farquaad), *Hairspray* (Corny Collins). Hanover Theatre: *A Christmas Carol* (2017-22). Four-time IRNE nominee. B.F.A. Emerson College. Proud member of AEA. For Amanda and Georgia, always. marklinehan.com. Instagram: @linehan.mark.



**JEFF MAHONEY** he/him (Trevor) Previous GBSC shows include *The Addams Family*, *My Fair Lady*, *Miracle on 34th Street*, and last season's staged reading of *Dear Jack*, *Dear Louise*. Other

area shows include *Shear Madness* (Charles Playhouse), *Dead Man's Cell Phone*, *Into the Woods*, *1776* (Lyric Stage), *Assassins*, *The Good Negro* (Company One), *The Mystery of Edwin Drood* (Speakeasy Stage).



**PAUL MELENDY\*** he/him (Chris) Pall is completely chapped to be apart from Greater Boston Stage Company's 250th season. His priors at GBSC include *Kloo*, *Dinner 4 Juan*, *The 39 Stairs*, *Miss*

*Holmes Does Returns (at Costco)*, and *Titanish*. And, of coarse, his one-human showing of *The Legend of Sloppy Hollow*, which earned him the Norton Antivirus Award for Outstanding Participation. Recent aerial collaborations include *The Drowsy Chaperone* (Lyric Stage Company), *Tall Tales of Blackburn Tavern* (Gloucester Stage Company), *Vanity Fair* (Central Square Theater), *A Christmas Carol and The Wickhams: Christmas at Pemberley* (Merrimack Repertory Theater), and *A Confederacy of Dunces* (w/Nick Offerman, Huntington Theater Company). You may catch Pail on your local TV screens in commercials for VistaPrint or Plymouth Rock Insurance or streaming on HBO/CineMaxGo in the first season of



Visit us for all of your  
financial needs.  
We've reserved a seat just for you.



*Since 1869*

**The Savings Bank**  
Local. Innovative. Trusted.

Wakefield | Lynnfield | North Reading  
Andover | Methuen

800-246-2009 | [www.tsbdirect.bank](http://www.tsbdirect.bank)

Member FDIC | Member DIF | Equal Housing Lender

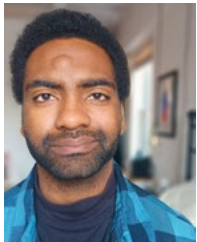




*Julia*. Film credits include *Love, Weddings, & Other Disasters*, *Father of the Year*, *Unfinished Business*, *The Makeover*, *The Pink Panther Deux*, and the upcoming Amy Adams film *At the Sea*. Come see him this July in Gloucester Stage Company's regional premiere of *The Garbologists!* To contract Pool or to peek at alllllll his internet junk, please check out [www.paulmelendy.com](http://www.paulmelendy.com). Thank you and enjoy shoe!

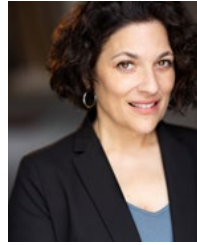


**SARAH MORIN** she/her (Denise) is thrilled to be joining the cast of *The Play That Goes Wrong* for another round of fun at GBSC. Favorite credits include: *The Hound of the Baskervilles* (Central Square Theater), *The Winter Wonderettes* and *Titanish* (Greater Boston Stage), *Romeo and Juliet*, *Macbeth*, *Much Ado About Nothing*, *A Midsummer Night's Dream* (Shit-Faced Shakespeare), *Mary Poppins* (Create. Inspire. Change Theater) *Romeo and Juliet*, *A Midsummer Night's Dream* (Shakespeare Now!) Big thanks to Tyler for all their support and light, and mom and pops for all their love! @sarahkmorin.



**STEWART EVAN SMITH\*** he/him (Jonathan) has appeared with GBSC in *Titanish*, *Clue*, *Boulevard of Bold Dreams*, *The Three Musketeers*, *It's a Wonderful Life*, and *Lucky Stiff*. Favorite local credits also include Joe Turner's *Come and Gone* (The Huntington), *Edward II* (Actors Shakespeare Project), *Between Riverside and Crazy* (Speakeasy Stage; IRNE nomination), *She Kills Monsters* (Company One), and lots of different roles with Shit-Faced Shakespeare. Film credits include the independent films *Uncanny Harbor*, *Scoundrel*, and *How to Win the Internet*, as well as the YouTube

series *Staying in Boston*. He also provides voices to various characters in *The Penumbra Podcast*.



**CEIT ZWEIL\*** she/her (Annie) is a professional performer and arts educator. Area credits include Dory/Evelyn in *Merrily We Roll Along* (Huntington), Gooch in *Mame* (IRNE nom), Rita in *Lucky Stiff*, Smitty in *How to Succeed...* (IRNE nom), and Alice in *The Addams Family* (all at GBSC), as well as work with Commonwealth Shakespeare, Lyric Stage, Wheelock Family Theatre, New Repertory and New England Light Opera. She has had the pleasure of teaching for some amazing arts education programs, including The Young Company at Greater Boston Stage. She has also had a career in educational media, including work on many flagship series for PBS, as well as in outreach and development for arts and culture organizations. She holds a BA in History (Smith) and a MA in Theatre Education (Emerson).

\* Member of Actor's Equity Association  
+ Young Company Alumni

## SPECIAL THANKS

Kristian Enge  
Greg Hanawalt  
Ryan Natcharian  
Marsh Smith  
Emily Fitzgerald  
Stephan Barnes  
Stoneham High School  
New England Mobile Audio  
Nate Haywood  
Jenna Ives  
Isabel Samuel  
Addie Pate  
Nate Haywood  
Mark Allison  
Lyric Stage Company  
Moonbox Productions  
David Pignone, Stoneham HS Athletics Dept.



# WORKING TOGETHER TO MOVE OUR COMMUNITIES FORWARD.

Salem Five is dedicated to helping our region thrive by understanding and supporting what matters most. We are thrilled to support this and celebrate the important mission of **Greater Boston Stage Company**.

**SalemFive**

**CHARITABLE FOUNDATION**

[salemfive.com](https://salemfive.com) | 800.850.5000

Member FDIC



**JAMES CANNON** he/him (Sound Designer) *The Piano Lesson* (Actor's Shakespeare Project). *Jersey Boys*, *Fiddler on the Roof*, *Disney's Frozen* (North Shore Music Theater). *The Full Monty*, *The Minutes*, *LIZZIE: The Musical*, *The Color Purple*, *Dracula: A Feminist Revenge Fantasy...Really* (Umbrella Stage Company) *Sweeney Todd: The Demon Barber of Fleet Street*, *Passing Strange*, *The Rocky Horror Show* (Moonbox Productions) *FAIRVIEW* (Speakeasy Stage Company) *A Wrinkle in Time* (Wheelock Family Theater) *Next to Normal* (Front Porch Arts Collective/Central Square Theater) *Boulevard of Bold Dreams* (Greater Boston Stage Company) He gives all the love to his son, Trevanté, and his supportive partner Rebecca!

**DANIELLE IBRAHIM** she/her (Scenic Designer) is a Boston-based theater artist, technician, and educator. A graduate of Boston University, Danielle has worked with numerous companies throughout Massachusetts in a variety of roles. Select credits include Props Designer for Moonbox Production's *Crowns* (2025), Scenic Designer for Boston Conservatory Opera Department's *Summer & Smoke* (2024) and *Voir Dire* (2024), Props Designer for Wheelock Family Theater's *SpongeBob: The Musical* (2024), Production Manager or Actors' Shakespeare Project (24-25 season), Production Manager for Odyssey Opera (2024-2025 season), Technical Director for Wellfleet Harbor Actors Theatre (2023 & 2024 seasons) among many others.

**CASSIE LEBEAU** she/they (Production Assistant) graduated with her Bachelor of Fine Arts degree in technical theatre with a concentration in stage management from Salem State University. Previous stage management and production assistant credits include *Guys and Dolls*, *Titanish*, *All Is Calm: The Christmas Truce of 1914*, *Clue On Stage*, and *Little Women: The Broadway*

*Musical* (Greater Boston Stage Company), *A Year With Frog and Toad*, *A Wrinkle in Time* and *Bud, Not Buddy* (Wheelock Family Theatre at Boston University), *Pericles* (Commonwealth Shakespeare Company), and *Gloria* (Gloucester Stage Company).

**HAZEL PETERS\*** they/them (Assistant Stage Manager) Greater Boston Stage Company: *The Irish and How They Got That Way* (Props Master), *Dinner for One* (Props Master), Young Company Summer Festival 2024 (Props Master). Lyric Stage: *Noises Off* (ASM), *The Game's Afoot* (Performance ASM), *Assassins* (Assistant Director), *The Great Leap* (ASM). Hub Theatre: *Burn This* (PSM). Lyric BackStage TYA: *Party Bots* (Props Artisan), *Made You Look* (Props Artisan). Studio Theatre Worcester: *The Thanksgiving Play* (Scenic, Sound, and Props Designer), *The Mad Ones* (PSM). Enter Stage Left: *Finding Nemo Jr.* (PSM), *Legally Blonde*, *The Musical* (PSM). Hazel is a graduate of Bennington College and a member of Actors' Equity. Website: hazelpeters.com.

**DAVID ALLEN PRESCOTT** they/them (Props Designer) is an actor, director, and designer. Previous prop designs include *South Pacific* and *An American in Paris* (Reagle Music Theatre), *Network* (The Umbrella), and *The Winter Wonderettes* at GBSC. David is Associate Artistic Director and Scene Designer for City on a Hill Arts, and Theatre Director at Montachusett Regional Vocational Technical High School.

**SAMANTHA RICHERT** she/her (Violence & Intimacy Designer) is an AEA actor, director, dialect coach, violence designer and intimacy coordinator, and ecstatic to be back with the Greater Boston Stage team! Samantha last performed on the Stoneham stage in *Lucky Stiff* and has provided direction and fight choreography for numerous productions for the young company. She was most recently seen onstage in



*Noises Off* at the Lyric Stage Company, and directed *Usual Girls* at Northeastern University, where she is an Associate Teaching Professor for the Department of Theatre Arts. She has recently undertaken certification for intimacy coordination through TIE and IDC and is excited to work again with Tyler. [samantharichert.com](http://samantharichert.com).

**TYLER ROSATI** he/him (Director) is a proud alumnus of The Young Company and a former Director of Education at Greater Boston Stage Company. GBSC credits: *Titanish* (Director), *Clue* (Assistant Director), *It's a Wonderful Life* (Co-Director) and *Altar Boyz* (Co-Director). With the Young Company, Tyler has directed over 25 productions with highlights including: *Sweeney Todd*, *Firebringer*, *Seussical*, *Jack and the Giant*, and *24 Hour Legally Blonde*. Tyler has spent the last 9 years as an actor, producer, director, and choreographer for *Shit-Faced Shakespeare*. Tyler will next be directing *Annie* here in 2026! Much love to the powerhouse team that helped make this giant show possible!

**E. ROSSER** she/her (Costume Designer) works magic as a freelance costume designer, puppet enthusiast, and general theater wizard for various groups in the Boston scene, including Speakeasy, Company One, the A.R.T., and Boston Playwright Theatre. She's thrilled to break her streak of 10 Young Company shows with a GBSC main-stage production! Most recent designs include *Dirty Rotten Scoundrels* with Moonbox, *46 Plays for America's First Ladies* at Hub Theatre, and a big spooky Swamp Witch puppet with Liars and Believers. [erossler.com](http://erossler.com).

**MELISSA SMITH** they/them (Production Assistant) is thrilled to be back at GBSC. They are a graduate of UMass Amherst where they studied theater and received a certificate in multicultural theater. Central Square Theater: *Ain't Misbehavin'* (Assistant Stage Manager),

*Alma* (Stage Manager, Fight Captain), *The Hound of the Baskervilles* (Assistant Stage Manager, Wardrobe). Hub Theater Company of Boston: *Burn This* (Assistant Stage Manager, Makeup Designer). Wheelock Family Theater: *Matilda the Musical* (Wardrobe, Electrics), *Wizard of Oz* (Wardrobe, Electrics), *Bud Not Buddy* (Electrics), *Make Way for Ducklings* (Electrics). UMASS Amherst: *Mr. Burns: a post electric play* (Stage Manager), *The Bacchae of Euripides* (Associate Stage Manager, Makeup Designer), *The Lily's Revenge* (Makeup Designer/ Supervisor). They would like to thank their family and friends for their unwavering love and support.

**MEGHAN WARD** (Production Manager/ Production Stage Manager) has been working as a theatre and events professional since the early 2000s. In addition to nearly two decades of work with the Greater Boston Stage Company, she has led countless other successful productions in the New York City and New England regions. Meghan often shares her experience in the performing arts by training and supporting young performers and technicians and works to promote diversity and inclusivity in all aspects of stagecraft. Meghan holds an MFA in Stage Management from Rutgers University, and a BA in Theatre from Keene State College.

**KATIE WHITEMORE** she/her (Lighting Designer) an NYC-based lighting designer, she is thrilled to return to GBSC for her second production. Design credits include: *Shrek: The Musical* (Black Rock Theatre), *A Quake that Shook Them All* (Limón Dance Company), *Rent* (Norwalk Conservatory), *Dreams, Legends, and Inspirations* (Dzul Dance), *I Love A Piano* (The Wick) *My Way* (Theatre by the Sea), *Searching for Abuelo* (The Tank), *Little Women* (GBSC), *Welcome to Clowntown* (The Tank) and *Gypsy* (The Wick). Katie received her B.F.A. from Salem State University. [Katiwhitemoredesign.com](http://Katiwhitemoredesign.com).

## BOARD OF TRUSTEES

Shanna Cahalane, CHAIR  
Daria Niewenhous, MA, JD, VICE-CHAIR  
Robert DiBella, TREASURER  
Melodie Wing, SECRETARY

Joan Cassidy  
Carolyn Saxon

Aricia Symes-Elmer  
Eric Bergstrom

Kiera McNelis Shaw +

## STAFF

MANAGEMENT  
Weylin Symes, PRODUCING ARTISTIC DIRECTOR  
Heather Mell, MANAGING DIRECTOR

FINANCE  
Reliant Accounting LLC, BOOKKEEPER

EDUCATION AND ARTISTIC  
Morgan Flynn, EDUCATION MANAGER  
Autumn Blazon-Brown+, EDUCATION AND ADMINISTRATIVE ASSOCIATE  
Meghan Ward, PRODUCTION MANAGER  
Ryan Natcharian, ASSISTANT PRODUCTION MANAGER.

MARKETING  
Bryan Miner+, DIRECTOR OF MARKETING AND PHILANTHROPY  
Ceit Zweil, GRANTS COORDINATOR AND PHILANTHROPY OPERATIONS ASSOC.  
Paul Luther, BOX OFFICE LEAD & GROUP SALES COORDINATOR  
Filomena Cunha, HOUSE MANAGER & CONCESSIONS SUPERVISOR

BOX OFFICE STAFF  
Jared Deamaral, Michael DeFillippi, Luna DeSano, Sophia Enokian, Fran Foti  
Robert Foti, Jacke Kenney, Carola Roeder, Steve Roeder, Mykael Rosa+  
and Jonathan Santoro+

## LAND ACKNOWLEDGEMENT

We acknowledge that our land is located on the traditional territories  
of the Wampanoag and the Massachusetts peoples.

+The Young Company at Greater Boston Stage Company alumni

GREATER BOSTON STAGE COMPANY

SEASON  
**25**  
GREATER BOSTON STAGE COMPANY



# FOUNDING F%#!#ERS

THE STORY OF ETHAN ALLEN  
AND BENEDICT ARNOLD

DIRECTED BY: WEYLIN SYMES

**MAY 2-18 2025**

395 MAIN STREET, STONEHAM MA. 02180

BY CONOR CASEY

Logo and Poster Design: courtesy of Stephen Merritt Design (2024)



# THANK YOU TO OUR GENEROUS DONORS!

All of us at Greater Boston Stage Company are thrilled to be making theatre for our community. We couldn't do it without you.

The following list represents gifts made to Greater Boston Stage Company between February 1, 2024, through March 24, 2025.

## CORPORATE, GOVERNMENT, AND FOUNDATION SUPPORT

### SILVER SEASON SPONSORS

MA Office of Travel and Tourism  
Stoneham Motor Co. - Platinum Show Sponsor for *Little Shop of Horrors*  
StonehamBank  
Symes Family Charitable Foundation

### FLAGSHIP SEASON SPONSORS (\$25,000+)

Massachusetts Cultural Council  
The Shubert Foundation  
Salem Five Charitable Foundation

### PLATINUM SPONSORS (\$10,000-\$24,999)

Bridgeton Properties\*  
Melrose Coop Foundation  
The Savings Bank - Show Sponsor for *The Irish and How They Got That Way*

### GOLD SPONSORS (\$1,000-\$9,999)

100 Women Who Care North of Boston  
American Online Giving^  
Bank of America Foundation^  
Boston Celtics Shamrock Foundation\*  
Gaetano's Restaurant  
Global Atlantic Foundation  
Gravestar Foundation  
Jackson Lumber & Millwork\*  
Northern Bank and Trust  
Rapid Liquors\*  
UBS - Pioneer Wealth Management  
Westminster Barrington Foundation

### CORPORATE FRIENDS (\$100-\$999)

Actors' Equity Foundation  
Amore Pizza Stoneham\*  
Mystic Valley Elder Services

Nobility Hill Tavern\*  
Parker Hannifin  
Pizza Mia\*  
Stoneham Chamber of Commerce  
Stop & Shop  
The Stones Common House & Kitchen\*  
The Triple T Foundation  
United Way of MA Bay and Merrimack Valley^

### GOVERNMENT SUPPORT

Medford Arts Council  
Melrose Cultural Council  
North Reading Cultural Council  
Wilmington Cultural Council  
Reading Cultural Council  
Stoneham Cultural Council  
Special thanks to State Senator Jason M. Lewis's and State Representative Michael Day's offices.

### THE YOUNG COMPANY SEASON SPONSOR (\$15,000)

Adelaide Breed Bayrd Foundation

### THE YOUNG COMPANY FUND-A-NEED SPONSOR (\$2,500)

Reading Cooperative Bank Charitable Foundation

\* In-Kind donations

^ Employee Matching Gift programs



**ALL PERFORMANCES  
WILL TAKE PLACE AT  
THE REGENT THEATRE**

**7 Medford Street  
Arlington, MA. 02474**



Book and Lyrics by Sarah Hammond  
Music by Will Aronson  
Based on the Pete the Cat series of  
books by Kimberly and James Dean

**781-279-2200 | GREATERBOSTONSTAGE.ORG  
395 MAIN STREET, STONEHAM, MASSACHUSETTS**

**Flagship Season Sponsors**



# INDIVIDUAL DONORS

## **Marquee Producer (\$25,000+)**

Anonymous

## **MARQUEE CONTRIBUTOR (\$10,000-\$24,999)**

Anonymous

Joan Cassidy\* and The Cassidy Family

## **MARQUEE ENTHUSIAST (\$1,000-\$9,999)**

Jess Adams

Cathy Alexander

Andrea and Eric Bergstrom\*

Michael and Shanna Cahalane\*

James Calabrese

Peter and Lynne Cameron

Darrin and Lori Courtney

Robert DiBella\*

Nick DiCiaccio and

Marguerite Shepard-DiCiaccio

In Honor of Jan Houghton

Wes and Sandy Elmer

Paula Falzone

Timothy E. Finn

The Flagg Family

James and Sharon Foley

Joan Ford Mongeau and

Peter Mongeau

Pamela Hartman

Janice Houghton

The Kennedy Family

Paul Marcheisiani

Daniel McDuffie

Mary Miner

Robert and Elizabeth Morin

Daria Niewenhous\* and Michael Rickley

Mr. & Mrs. Charles Przyjemski

Sandra Reinecke

Marsha Rosselli and Jim Driscoll

Carolyn Saxon\*

The Silk Family

Gavin and Denise Symes

Aricia Symes-Elmer\* and The Elmer Family

Ken Stack and Karen Vigurs-Stack

Meghan and Bryan Ward

Donna M. Weiss

Melodie Wing\* and David Szabo

The Zweil Family

## **ENTHUSIAST (\$250-\$999)**

Anonymous x3

Brandon Affeldt and Carissa Guglietta

Mark Cardono and Tracy Sioussat

David and Elizabeth Avery

Sandra and Ronald Avola

Dorothy Bergold

John and Mary Lou Bracciotti

Mary Ellen Burgess

Todd Burne

William Burns

Anna Chelton

Rich and Judy Clark

State Representative Michael Day

Julie DeLillo

John DePinto

Joanne Dimambro

Phil and Tricia DiPietro

Steve and Nancy DiTullio

Donated by Ann Doherty and

James Chalke

Peter Haydu and Dona Sommers

Badrieh Edalatpour

Ellen T. Finneran

Kyla Fullerton and Family

Frank Furnari and Thomas Wales

Teresa Gallinaro

Nancy Ghareeb

Ann Marie Giovino

Ron and Heather Grasso

Wendy Donna Grose

Nancy DeCaro Haley

The Estate of Sheila Halloran

The Hampson Family

Bill and Carol Hayes

Sarah J Consulting

Susan and Michael Kiewra

Patricia Kilty

William and Linda Kimball

Rose Koch

Paul Lacey

Sally and Steve Lamb

Andrew and Sharen Leonard

Christine Leslie

Cal Gals Nan and Sarah

Stephen and Dorothy Maio

Matz family

Edward and Lori McGrath

Beth and Brian McNelis

Kiera McNeils Shaw\* and John Shaw

Gary and Tina Mell

Katy Monthei and Ilya Finkler

Marge Montrone

Sarajane

Max Murphy

Piper and Aisling Murray

Sandy Nagler and Scott Hamberg

Nicole and Adrian Nial

Jim and Lisa Oosterman

Matthew and Diana Overlan

Pagliarulo Family

Betsy Peck



# SEASON 26 PREVIEW

## FEATHERBABY

*A bird with a bad  
attitude and a  
heart of feathers!*

September 12-28, 2025

## AN IRISH CAROL

*Christmas spirits, Irish  
humor, and a holiday  
to remember.*

December 5-21, 2025

## WHAT THE CONSTITUTION MEANS TO ME

*A personal journey  
through history, heritage,  
and the fight for change.*

April 10-26, 2026

## MURDER FOR TWO

*One murder.  
Two actors. Six suspects.  
And one piano!*

Oct. 24 – Nov. 9, 2025

## WAIT UNTIL DARK

*In the shadows,  
the truth will  
come to light.*

March 6-22, 2026

## ANNIE

*The timeless tale of  
resilience, joy, and  
the power of tomorrow.*

May 29 – June 28, 2026

Wendy Pirsig  
 In Honor of Honey Lee  
 Dianne Rice  
 Mary Roach  
 The Santoro Family  
 In Honor of Patricia Kilty  
 Nicole Solari  
 Anthony Speziale  
 Sulloway Family  
 Tina Szoka  
 Judith Terrazano  
 Oren and Noah Walker-Gilmore  
 Susan Weiner  
 Cheryl and Robert Werlin  
 Nathan, Amanda, Nate, and Sammy Young  
 Elizabeth and Tuggelin Yourgrauy  
 Zhang Giving Fund  
 Stephen Zubricki, IV, and  
 Autumn Blazon-Brown

### **Fan (\$100-\$249)**

Anonymous x14  
 Cynthia Allen  
 Claudia Arnoff  
 Jim Arnold and Krista Macari  
 Julie Barnes  
 Bob and Patricia Berens  
 Raymond and Joan Bird  
 Norman Bitsoli  
 Sarah Bixler and Christopher Tonkin  
 Jim, Lauren, Grace, and James  
 In honor of S&T  
 A. Kathryn Butler  
 Brendan and Lindsey Chisholm  
 Brendan and Jane Connell  
 Jeanne Cotter  
 Albert DeBueriis  
 Jude Dehart  
 Donna Dickie  
 Dr. Bruce Doyle  
 Susan Finn  
 Mary Fiore-Godes  
 Jackie Fitzgerald-Boyd  
 In memory of Marjorie Patten <3  
 Jackie Green  
 Lois Groves  
 Kathy Habeeb  
 Susan Hegel  
 Philip Higdon and Linda Johnson  
 Rose Howard  
 Lisa Killeen  
 Robert Lang  
 The Lecoq Family  
 Mark and Karen Leff  
 Cris Logan  
 Jim and Theresa Markiewicz  
 Jacqueline Mattis  
 Susan McClory

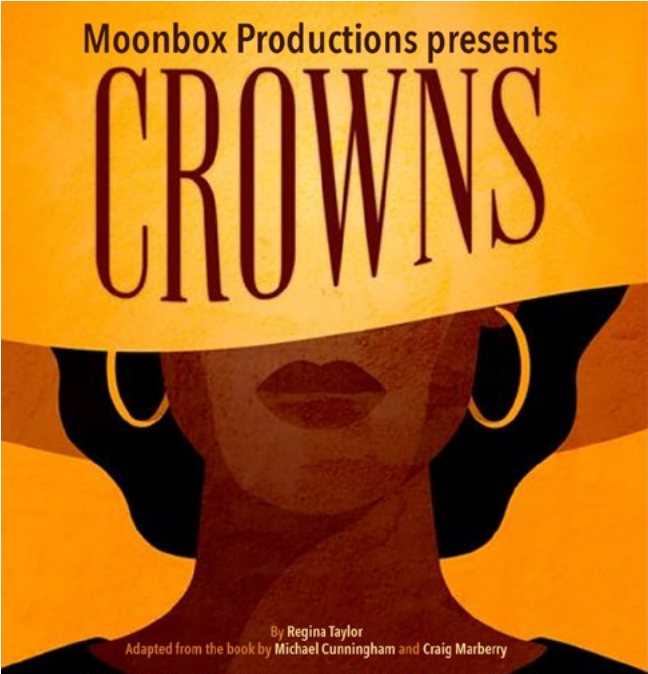
Paul and Carolyn McCluskey  
 Nancy Meagher Mills  
 Linda Morey  
 Coogan Moyer  
 William Murphy and Maryellen Perrotta  
 Judith Murray and James Pidacks  
 Pat Nugent  
 Stephen and Margaret Ober  
 John and Margaret O'Keefe  
 Mary Parr  
 Joan Lemire and John Peterson  
 Lee and Marion Phalen  
 Michael and Donna Pisari  
 Bob and Mary Ann Quinn  
 Linda Reppucci  
 Richard and Jean Roketenetz  
 Sheila Ryder  
 Sid and Marion Schweiger  
 Stephen Senna  
 Faith Skipper  
 Paula Spizziri  
 Martha Stearns  
 Laura Stern  
 Denis and Marnie Stratford  
 Strong Family  
 Jill Tapper  
 Ava Taylor  
 Wendy Tirck  
 Bruce and Kathy Varney  
 Brian and Deb Walsh

\* Indicates GBSC Board of Trustees

### **ACTORS' EQUITY ASSOCIATION (AEA)**

was founded in 1913 as the first of the American actor unions. Equity's mission is to advance, promote and foster the art of live theatre as an essential component of our society. Through its agreement with Equity, this theatre has committed to the fair treatment of the actors and stage managers employed in this production. AEA is a member of the AFL-CIO and is affiliated with FIA, an international organization of performing arts unions. For more information, visit [actorsequity.org](http://actorsequity.org).





Moonbox Productions presents

# CROWNS

By Regina Taylor  
Adapted from the book by Michael Cunningham and Craig Marberry

Directed by Regine Vital / Associate Directed by Davron Monroe  
Music Directed by David Coleman

"A powerful mix of gospel music and 'hattitude'"

**APRIL 11 - MAY 4**  
at  
Arrow Street Arts  
Cambridge

Tix at  
**ArrowStArts.org**



**LYRIC STAGE BOSTON**

**APRIL 4-27**  
LyricStage.com | 617.585.5678  
Follow us!   

Love is kind  
even when  
it's hard.

# ?The? Great? Reveal?

BY  
DAVID VALDES

DIRECTORS  
BRIDGET KATHLEEN O'LEARY & CHARLOTTE SNOW

## DONATIONS

Your philanthropic support is crucial to GBSC's continued success. Only 60% of the annual operating budget is covered by ticket sales. The theatre relies on the generosity of our sponsors and donors to provide the high quality professional theatre and arts education programs you have come to expect. From corporate sponsorships to individual gifts, there are so many different ways you can support GBSC. For more information on how you can make a gift, call Bryan Miner at 781-587-7907 or give online at [greaterbostonstage.org](http://greaterbostonstage.org).

## CONTACT INFORMATION

395 Main Street  
Stoneham, MA 02180  
Box Office: 781-279-2200  
Administrative Office: 781-279-7885  
[boxoffice@greaterbostonstage.org](mailto:boxoffice@greaterbostonstage.org)  
[greaterbostonstage.org](http://greaterbostonstage.org)

## GROUPS

Special discounts are available for groups of 10 or more. Groups are also invited to use the gallery for exclusive pre or post-show receptions. To schedule your next event, contact Paul Luther at 781-587-7912 or [paul@greaterbostonstage.org](mailto:paul@greaterbostonstage.org).

## AGE APPROPRIATENESS

We rarely suggest appropriate ages for our productions. We assume all children are different and that guardians are the best judges for what is appropriate. We are happy to provide as much information as possible to help make these decisions. If you have questions, please ask the Box Office.

## ACCESSIBILITY



Greater Boston Stage Company is committed to making theatre accessible to everyone. Accessible Seating: Patrons with a wheelchair and/or oxygen tank, or requiring other assistance, should inform the Box Office in advance so that accessible seating can be reserved.



Assisted listening devices are available at the Box Office at no charge. These devices have been made possible by the generous support of Barile Family Funeral Homes.



Babes in arms are not permitted and a seat must be reserved for every guest. A limited number of booster seats are available at the Box Office.



Cost should not be a barrier to enjoying the arts! Information is available at the box office about the theatre's EBT Card to Culture, Frugal Friday, and 25 for \$25 discounts. The theatre is also pleased to offer scholarships & attendance support for education programs through Fund-A-Need.

## GENERAL POLICIES

The use of cameras and recording devices in the theatre is strictly prohibited.

Please turn off all pagers, cellular phones, watch alarms, and other noisemaking equipment when in the theatre.

In consideration for performers and other audience members, all latecomers will be seated at the discretion of the management in order to minimize distractions in our intimate theatre space.

Greater Boston Stage Company reserves the right to ask any patron causing a disturbance to leave the premises without refund.



# SUMMER FESTIVAL 2025

JULY 7 - AUGUST 10



GRADES 4-12



## OVERTURE 2025

GRADES 1-4



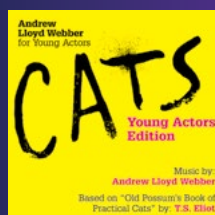
JULY 7-18



JULY 21-AUGUST 1

## 72-HOUR MUSICAL VACATION

GRADES 4-6



FEBRUARY 18-21

APRIL 22-25





*Celebrating 25 Years!*



**DINNER FOR ONE**  
November 1 - 17, 2024



**WINTER WONDERETTES**  
Nov. 29 - Dec. 22, 2024



**THE IRISH AND HOW THEY GOT THAT WAY**  
Feb. 28 - March 16, 2025



**THE PLAY THAT GOES WRONG**  
March 28 - April 19, 2025



**FOUNDING F%#ERS  
(EFFERS)**  
May 2 - 18, 2025



**LITTLE SHOP OF HORRORS**  
June 6 - 29, 2025