

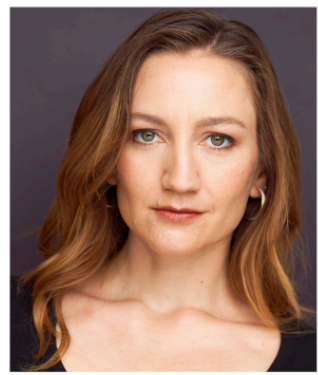


FOUNDING F%!#ERS

THE STORY OF ETHAN ALLEN
AND BENEDICT ARNOLD

PRESS KIT

MEET THE CAST!



MARGE
DUNN



WILL
MCGARRAHAN



JULES
TALBOT



STEWART
EVAN SMITH



JEFF
MITCHELL



JENNY S.
LEE



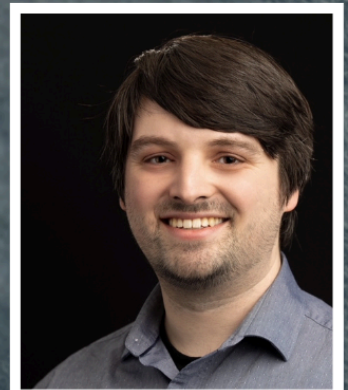
OLIVIA
DUMAINE



WILLIAM
JOHNSTON



CHLOE
BOYAN
(UNDERSTUDY)



ALEX
DEROO
(UNDERSTUDY)

A Revolutionary Comedy Hits the Stage at Greater Boston Stage Company!



Featuring Will McGarrah*, Marge Dunn*, William Johnston*, Jenny S. Lee*, Stewart Evan Smith*, Jules Talbot*, Jeff Mitchell* and Olivia Dumaine*. Understudies include Chloe Boyan and Alex Deroo.

Written by: Conor Casey
Directed by: Weylin Symes

Stoneham, MA – Greater Boston Stage Company is thrilled to announce the **world premiere** of ***FOUNDING F%!#ERS: The Story of Ethan Allen and Benedict Arnold***, running **May 2 – 18, 2025**. This bold new comedy by playwright **Conor Casey** is the latest offering from the **Don Fulton New Works Project**, Greater Boston Stage Company's initiative to champion original plays and emerging voices in American theatre.

An irreverent and wildly entertaining reimagining of Revolutionary War history, ***FOUNDING F%!#ERS*** delivers a hilariously absurd take on Vermont folk hero **Ethan Allen** and infamous turncoat **Benedict Arnold** as they bumble and battle their way through a comically twisted version of the birth of our nation. Brimming with outrageous moments, unexpected encounters, and delightfully inaccurate history, this brand-new play invites audiences to question what we think we know about patriotism, power, and the people who shaped America.

Directed by **Producing Artistic Director Weylin Symes**, the production promises a fast-paced comedy and a powerhouse cast of Boston-based actors. "We're always excited to support new work at Greater Boston Stage Company," says Symes. "***FOUNDING F%!#ERS*** is smart, funny, and wildly original. It's exactly the kind of bold, imaginative storytelling that makes live theatre so special."

Performances of ***FOUNDING F%!#ERS*** will be held at Greater Boston Stage Company in Stoneham, MA. Tickets are available at greaterbostonstage.org or by calling the Box Office at **(781) 279-2200**.

The production team includes **Weylin Symes**# (Director), **Tyler Rosati**+ (Assistant Director/Choreographer), **Mark Linehan** (Assistant Director/Dramaturg) **Katy Monthei** (Scenic Designer), **Corey Whittemore** (Lighting Designer), **Deirdre Gerrard** (Costume Designer), **Caroline Eng**^+ (Sound Designer), **Adelaide Majeski** (Properties Designer), **Mark Linehan** (Dramaturg/Assistant Director), **Marsha Smith*** (Production Stage Manager), **E.D. Fitzgerald*** (Assistant Stage Manager), **Sam Kiff** (Production Assistant), **Marge Dunn*** (Fight Captain) and **Kira Troilo** (Diversity, Equity and Inclusion Consultant).

KEY: *Member of AEA ^Member of IATSE/USA #Member of SSDC +Young Company Alum

Single Tickets: \$64-\$69 Adults; \$59-\$64 Seniors; \$25 Students. For more information or to purchase tickets, call the Box Office at Greater Boston Stage Company at (781) 279-2200, or visit <https://www.greaterbostonstage.org/shows-tickets/mainstage/founding-fers-effers/>.

DOWNLOAD PHOTOGRAPHY

***Photos by Maggie Hall Photography**

<http://greaterbostonstage.org/press-kit/>



DIRECTOR BIO

WEYLIN SYMES# he/him (Director) Weylin is Greater Boston Stage Company's Producing Artistic Director. Weylin Symes has been extensively involved in the renovation of Greater Boston Stage's building since 1999. Over the past 25 years, he has overseen the growth of the theatre into one of Boston's five largest performing arts organizations, as recognized by the

Boston Business Journal. After serving as the theatre's first Artistic Associate, Weylin assumed the role of Artistic Director in 2003 and was named Producing Artistic Director in 2007. In his time at GBSC, Weylin has directed over 30 productions for the Mainstage and The Young Company and adapted several pieces for performance on GBSC's stage, including *The Old Man and the Sea*, *Dracula*, and *It's a Wonderful Life*. He also wrote *Last Night at Bowl-Mor Lanes* and the story and book for the original musical *Lobster Girl*, both of which premiered on GBSC's stage. In 2013, he completed an adaptation of the Grimm Fairy Tale *The Handless Maiden* for performance by The Young Company at GBSC.

CAST BIOS

CHLOE BOYAN she/her (Understudy) is a Boston-based actor originally from Sacramento, CA and this is her first production with GBSC!! Regional: *The Winter's Tale*, *A Midsummer Night's Dream* (Commonwealth Shakespeare Company), *A Midsummer Night's Dream*, *Much Ado About Nothing*, *Hamlet* (Sh!t-Faced Shakespeare), *Lysistrata* (Oregon Shakespeare Festival), *The Elevator* (New York Theatre Festival), *Family Vacation* (Broadway Bound Theatre Festival), *A Christmas Carol*, *The Full Monty*, *The Play That Goes Wrong* (Oregon Cabaret Theatre). Education: BFA in Acting from Southern Oregon University, Commonwealth Shakespeare Company Apprentice Program 2022.

www.chloeboyan.com.

ALEX DEROO he/him (Understudy) is a Boston based actor and musician. He has worked with various Theatre companies around the Boston/North Shore area over the years and loves having the opportunity to collaborate with fellow artists on any creative endeavors be it theatrical or musical. Recent credits include *As You Like It* (Silvius), *Art* (Serge), *Romeo and Juliet* (Tybalt), *Arcadia* (Bernard) with Castle Hill Productions. Alex would like to thank his family, fiancé, and friends for their continued support over the years.

MARGE DUNN* she/her (Benedict Arnold/Ensemble/Fight Captain) returns to GBSC having played Sherlock Holmes (*Miss Holmes*, *Miss Holmes Returns*), Mary Bailey (*It's a Wonderful Life*), and Ruth/Narrator/Tartar (*Jonah & The Whale*). Regional credits include *Murder on the Orient Express* (Lyric Stage Co.); *Hair* (New Repertory Theatre); *Three Sisters* (IRNE nom), *And a Nightingale Sang* (IRNE nom, Wellesley Repertory Theatre); and the Elliot Norton Award winning *Cloud 9* (Central Sq. Theatre). Film/TV: *The Blacklist* (NBC/Universal); *Evil Lives Here* (ID Channel); independent films *Fidelity*, *Monogamy of Swans*. Marge currently lives in Brooklyn, NY. @sgtmarge.

OLIVIA DUMAINE* she/her (Seth Warner/Ensemble) is a Boston-based actor and intimacy director. Select acting credits include: *The Curious Incident of the Dog in the Night-time*, *Three Sisters* (Apollinaire Theatre Company); *Macbeth*, *What Rough Beasts* (Underlings Theatre Company), *Henry IV* (Praxis Stage). Liv has also been a member of Sh!t-faced Shakespeare since 2022, performing in productions of *The Taming of the Shrew*, *Macbeth*, *A Midsummer Night's Dream*, and *Hamlet*. She is a graduate of the BFA Theatre Performance program at Salem State University and is pending certification with Intimacy Directors & Coordinators. www.LivDumaine.com.

WILLIAM JOHNSTON* he/him (Ethan Allen/Ensemble) is an actor based out of Chocorua, NH. Will has worked largely in the North Shore area where you've perhaps seen him at the Crane Estate in Ipswich for his role as Valentine in *Arcadia* and more. Or as Nathaniel Hawthorne and Doctor John Collin's Warren with Intramersive in Salem, MA. When not in the North Shore performing, Will spends his time traveling with his wife and making artisanal cheese and ice cream at his family's creamery.

JENNY S. LEE* she/her (Peggy Shippen/Ensemble) is a Boston-based Korean American actress, director, and arts administrator who serves as Associate Producer at CHUANG Stage, Boston's Asian American theatre company. Select acting credits: *The Recursion of a Moth* (Chrys, Boston Playwrights Theatre), *The Hound of the Baskervilles* (Watson, Central Square Theatre), *Yellow Face* (Jane Krakowski & Others, Lyric Stage), *Troublemaker* (May Yu) and *Takeover* (Pansy) at Asian American Playwrights Collective. Select directing credits: *Emma* (AD, Actor Shakespeare Project), *The Heart Sellers* (AD, Huntington Theatre), *Luz & Urduja* (CHUANG Stage). IG: @jennyslee // thejennyslee.com.

WILL MCGARRAHAN* he/him (Narrator/John Andre/Ensemble) is happy to return to Greater Boston Stage after appearing in *Mame* and *Being Earnest*. Other recent local credits include Ernie/Oscar Wilde in *A Man of No Importance* at SpeakEasy Stage; Toad in *A Year with Frog and Toad* at Wheelock Family Theater; Jensen in *Network* and Harold in *The Fully Monty* at The Umbrella Stage; Callahan in *Legally Blonde* for Moonbox Productions; Mickey Marcus in *The Normal Heart* at New Rep; and Chekhov/Tchaikovsky/Tolstoy in *Preludes* and Burbage/Jaggard in *The Book of Will* at Lyric Stage.

JEFF MITCHELL* (Rosie/Ensemble) is thrilled to make his Greater Boston Stage debut. Recent credits include Ensemble in *The Full Monty* (Umbrella Stage Company), Robert/Thomas in *The Play the Goes Wrong* (Concord Players), and Jon in *tick, tick... BOOM!* (Colonial Chorus Players). Other notable roles include the Stage Manager in *Our Town*, Dennis in *All Shook Up*, Freddy in *Dirty Rotten Scoundrels*, Emmett in *Legally Blonde: The Musical*, and Benedick in *Much Ado About Nothing*. Jeff served as the Assistant Director for *The Old Man and the Old Moon* at Umbrella Stage and was the designer/puppeteer for *The Shakespearean Jazz Show* seen at ArtsEmerson & Green Room 42 in NYC.

STEWART EVAN SMITH* he/him (Goldfinch/Ensemble) has appeared with GBSC in *The Play That Goes Wrong*, *Titanish*, *Clue*, *Boulevard of Bold Dreams*, *The Three Musketeers*, *It's a Wonderful Life*, and *Lucky Stiff*. Favorite local credits include *Joe Turner's Come and Gone* (The Huntington), *Edward II* (Actors Shakespeare Project), *Between Riverside and Crazy* (Speakeasy Stage; IRNE nomination), *She Kills Monsters* (Company One), and many roles with Shit-Faced Shakespeare. Film credits include *Uncanny Harbor*, *Scoundrel*, *How to Win the Internet*, and YouTube's *Staying in Boston*. He also voices characters in *The Penumbra Podcast*.

JULES TALBOT*+ (Burgess/Ensemble) Greater Boston Stage Company: *The Best Christmas Pageant Ever*. Regional: *John Proctor is the Villain* (The Huntington—Elliot Norton nom.); *Romeo and Juliet*, *Coriolanus* (Actors' Shakespeare Project); *Lyric Back Stage* (Lyric Stage Company); *Alice*, *Pippi Longstocking*, *The Miracle Worker* (Wheelock Family Theatre); *Wild Swimming* (Apollinaire Theatre Company); *The Nether* (Flat Earth Theatre). New York: *THE DRAW* (The Tank). Education: BA NYU. @jules_talbot. julestalbot.com.

ABOUT GREATER BOSTON STAGE COMPANY

We bring vibrant professional theatre and dramatic education beyond the boundaries of Boston, featuring world and regional premieres alongside fresh interpretations of familiar work. Within this setting, we uniquely foster the artists of tomorrow by providing ongoing performance and employment opportunities to our company of current and former students. Now in its 25th Season of live theatre in Stoneham, MA, Greater Boston Stage Company produces six Mainstage shows, presents a series of Special Events, and runs year-round classes, lessons, and fully staged productions through The Young Company for students in grades 1–12.

Box Office: (781) 279-2200; boxoffice@greaterbostonstage.org

Box Office Hours: Tuesdays – Fridays, noon to 4pm

Location: 395 Main Street, Stoneham, MA 02180

Website: greaterbostonstage.org

Facebook: Greater Boston Stage Company

Instagram: [gbstageco](https://www.instagram.com/gbstageco)

Flagship Sponsors: Mass Cultural Council, Salem Five Charitable Foundation, and StonehamBank.