

SEASON
25
Greater Boston Stage Company



FOUNDING F%!#ERS

THE STORY OF ETHAN ALLEN AND BENEDICT ARNOLD



FLAGSHIP SEASON SPONSORS





A NOTE FROM THE DIRECTOR

Welcome to our annual Don Fulton New Works Project production! Don Fulton was an incredible supporter of GBS and he absolutely LOVED theatre - especially new theatre. That's why he made an incredibly generous donation that allows us to produce one world premiere play every season. Making new theatre is a huge financial risk since we're asking people (you) to come to something they've never heard of. But we think that part of the job of theatre is to speak to what is happening in the world and reflect it back to us, so we want to make sure we are helping new stories come to life along with your old favorites.

As Stoneham celebrates 300 years and our country honors it's 250th anniversary, this silly and irreverent look at the messiness, virtue and vice of how a country is formed and held together feels particularly timely. This play reminds us that our founding fathers were just as divided, frustrated, maddening and occasionally inspiring as our leaders today.

Thanks for trying something new. And if you're someone who loves the surprise and thrill of being the first person to see a piece of live theatre, consider making a donation to help us continue producing new work.

Weylin Symes

GREATER BOSTON STAGE COMPANY PRESENTS
WORLD PREMIERE

FOUNDING F%#!#ERS

By Conor Casey
Don Fulton New Works Project

DIRECTOR
Weylin Symes #

ASSISTANT DIRECTOR/CHOREOGRAPHER
Tyler Rosati+

SCENIC DESIGNER
Katy Monthei

LIGHTING DESIGNER
Corey Whittemore

COSTUME DESIGNER
Deirdre Gerrard

SOUND DESIGNER
Caroline Eng^^

PROPERTIES MASTER
Adelaide Majeski

DRAMATURG/ASSISTANT DIRECTOR
Mark Linehan

PRODUCTION STAGE MANAGER
Marsha Smith*

ASSISTANT STAGE MANAGER
E.D. Fitzgerald*

FIGHT CAPTAIN
Marge Dunn*

PRODUCTION ASSISTANT
Sam Kiff

PRODUCTION MANAGER
Meghan Ward

ASSISTANT PRODUCTION MANAGER
Ryan Natcharian

EQUITY, DIVERSITY &
INCLUSION CONSULTANT
Kira Troilo, Art & Soul Consulting LLC.

* Member of Actor's Equity Association
Member of SSDC
^ member of IATSE/USA
+Young Company alumni

Your neighbors and trusted financial partners.

Who We Are

We are more than a bank, we are your neighbors. For over 135 years it has been our mission to drive financial success, encourage economic stability and improve the lives of everyone who lives and works in our community.

Learn more about us at www.stonehambank.com



 **StonehamBank**

Expect more. Get more. Do more.



Member FDIC
Member DIF



CAST AND PRODUCTION TEAM

*Member of Actors' Equity Association,
the union of professional actors and stage managers in the United States.



The use of any recording device, either audio or video, and the taking of photographs either with or without flash is strictly prohibited. Please turn off all electronic devices such as cellular phones, beepers, and watches. The use of cell phones in the theatre is prohibited.



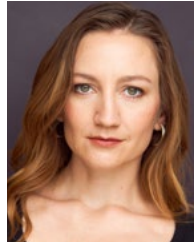
CHLOE BOYAN she/her (Understudy) is a Boston-based actor originally from Sacramento, CA and this is her first production with GBSC!! Regional: The Winter's Tale, A Midsummer Night's

Dream (Commonwealth Shakespeare Company), A Midsummer Night's Dream, Much Ado About Nothing, Hamlet (Shit-Faced Shakespeare), Lysistrata (Oregon Shakespeare Festival), The Elevator (New York Theatre Festival), Family Vacation (Broadway Bound Theatre Festival), A Christmas Carol, The Full Monty, The Play That Goes Wrong (Oregon Cabaret Theatre). Education: BFA in Acting from Southern Oregon University, Commonwealth Shakespeare Company Apprentice Program 2022. www.chloeboyan.com.



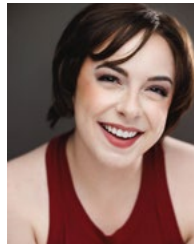
ALEX DEROO he/him (Understudy) is a Boston based actor and musician. He has worked with various Theatre companies around the Boston/ North Shore area over the years and loves

having the opportunity to collaborate with fellow artists on any creative endeavors be it theatrical or musical. Recent credits include *As You Like It* (Silvius), *Art* (Serge), *Romeo and Juliet* (Tybalt), *Arcadia* (Bernard) with Castle Hill Productions. Alex would like to thank his family, fiancé, and friends for their continued support over the years.



MARGE DUNN* she/her (Benedict Arnold/ Ensemble/Fight Captain) returns to GBSC having played Sherlock Holmes (*Miss Holmes*, *Miss Holmes Returns*), Mary Bailey (*It's a Wonderful Life*), and

Ruth/Narrator/Tartar (*Jonah & The Whale*). Regional credits include *Murder on the Orient Express* (Lyric Stage Co.); *Hair* (New Repertory Theatre); *Three Sisters* (IRNE nom), *And a Nightingale Sang* (IRNE nom, Wellesley Repertory Theatre); and the Elliot Norton Award winning *Cloud 9* (Central Sq. Theatre). Film/TV: *The Blacklist* (NBC/Universal); *Evil Lives Here* (ID Channel); independent films *Fidelity*, *Monogamy of Swans*. Marge currently lives in Brooklyn, NY. @sgtmarge.



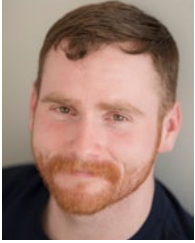
LIV DUMAINE* she/her (Seth Warner/Ensemble) is a Boston-based actor and intimacy director. Select acting credits include: *The Curious Incident of the Dog in the Night-time*, *Three Sisters* (Apollinaire Theatre Company); *Macbeth*, *What*

Rough Beasts (Underlings Theatre Company), *Henry IV* (Praxis Stage). Liv has also been a member of Shit-faced Shakespeare since 2022, performing in productions of *The Taming of the Shrew*, *Macbeth*, *A Midsummer Night's Dream*, and *Hamlet*. She is a graduate of the BFA Theatre Performance program at Salem State University and is pending certifica-



WWW.STONEHAMFORD.COM
781-438-0490

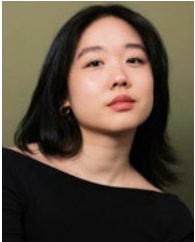
tion with Intimacy Directors & Coordinators. www.LivDumaine.com.



WILLIAM JOHNSTON*

he/him (Ethan Allen/Ensemble) is an actor based out of Chocorua, NH. Will has worked largely in the North Shore area where you've perhaps seen him at the Crane

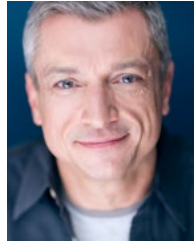
Estate in Ipswich for his role as Valentine in *Arcadia* and more. Or as Nathaniel Hawthorne and Doctor John Collin's Warren with Intramersive in Salem, MA. When not in the North Shore performing, Will spends his time traveling with his wife and making artisanal cheese and ice cream at his family's creamery.



JENNY S. LEE*

she/her (Peggy Shippen/Ensemble) is a Boston-based Korean American actress, director, and arts administrator who serves as Associate Producer at CHUANG

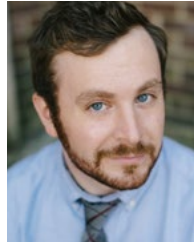
Stage, Boston's Asian American theatre company. Select acting credits: *The Recursion of a Moth* (Chrys, Boston Playwrights Theatre), *The Hound of the Baskervilles* (Watson, Central Square Theatre), *Yellow Face* (Jane Krakowski & Others, Lyric Stage), *Troublemaker* (May Yu) and *Takeover* (Pansy) at Asian American Playwrights Collective. Select directing credits: *Emma* (AD, Actor Shakespeare Project), *The Heart Sellers* (AD, Huntington Theatre), *Luz & Urduja* (CHUANG Stage). IG: @jennyslee // thejennyslee.com.



WILL MCGARRAHAN*

he/him (Narrator/John Andre/Ensemble) is happy to return to Greater Boston Stage after appearing in *Mame* and *Being Earnest*. Other recent local credits include

Ernie/Oscar Wilde in *A Man of No Importance* at SpeakEasy Stage; Toad in *A Year with Frog and Toad* at Wheelock Family Theater; Jensen in *Network* and Harold in *The Fully Monty* at The Umbrella Stage; Callahan in *Legally Blonde* for Moonbox Productions; Mickey Marcus in *The Normal Heart* at New Rep; and Chekhov/Tchaikovsky/Tolstoy in *Preludes* and Burbage/Jaggard in *The Book of Will* at Lyric Stage.



JEFF MITCHELL*

(Rosie/Ensemble) is thrilled to make his Greater Boston Stage debut. Recent credits include Ensemble in *The Full Monty* (Umbrella Stage Company), Robert/Thomas in

The Play the Goes Wrong (Concord Players), and Jon in *tick, tick... BOOM!* (Colonial Chorus Players). Other notable roles include the Stage Manager in *Our Town*, Dennis in *All Shook Up*, Freddy in *Dirty Rotten Scoundrels*, Emmett in *Legally Blonde: The Musical*, and Benedick in *Much Ado About Nothing*. Jeff served as the Assistant Director for *The Old Man and the Old Moon* at Umbrella Stage and was the designer/puppeteer for *The Shakespearean Jazz Show* seen at ArtsEmerson & Green Room 42 in NYC.



Visit us for all of your
financial needs.
We've reserved a seat just for you.



Since 1869

The Savings Bank
Local. Innovative. Trusted.

Wakefield | Lynnfield | North Reading
Andover | Methuen

800-246-2009 | www.tsbdirect.bank

Member FDIC | Member DIF | Equal Housing Lender





STEWART EVAN SMITH* he/him

(Goldfinch/Ensemble) has appeared with GBSC in *The Play That Goes Wrong*, *Titanish*, *Clue*, *Boulevard of Bold Dreams*, *The Three Musketeers*, *It's*

a Wonderful Life, and *Lucky Stiff*. Favorite local credits include *Joe Turner's Come and Gone* (The Huntington), *Edward II* (Actors Shakespeare Project), *Between Riverside and Crazy* (Speakeasy Stage; IRNE nomination), *She Kills Monsters* (Company One), and many roles with Shit-Faced Shakespeare. Film credits include *Uncanny Harbor*, *Scoundrel*, *How to Win the Internet*, and YouTube's *Staying in Boston*. He also voices characters in *The Penumbra Podcast*.



JULES TALBOT*+

(Burgess/Ensemble) Greater Boston Stage Company: *The Best Christmas Pageant Ever*. Regional: *John Proctor is the Villain* (The Huntington—Elliot Norton nom.);

Romeo and Juliet, *Coriolanus* (Actors' Shakespeare Project); *Lyric Back Stage* (Lyric Stage Company); *Alice*, *Pippi Longstocking*, *The Miracle Worker* (Wheelock Family Theatre); *Wild Swimming* (Apollinaire Theatre Company); *The Nether* (Flat Earth Theatre). New York: *THE DRAW* (The Tank). Education: BA NYU. @jules_talbot. julestalbot.com.

CAROLINE ENG*+ she/her (Sound Designer) Broadway: *Yellow Face* (Roundabout Theatre Company). GBSC: *The Salonnières*, *The Moors*, *Popcorn Falls*, *CLUE*. Off-Broadway & Regional: *Belfast Girls* (Irish Repertory Theatre), *Cymbeline* (NAATCO), *Coriolanus* (Oregon Shakespeare Festival, Portland Center Stage), *Merry Me* (NYTW),

Hurricane Diane (People's Light), *Fences* (Shakespeare & Company), *What the Constitution Means to Me* (WAM Theatre, Berkshire Theatre Group), *Three Sisters* (Two River Theatre). carolineengdesign.com

E.D. FITZGERALD* they/them (Assistant Stage Manager) is a Massachusetts-based stage manager, actor, and creator. Past GBSC credits include *Dinner for One* (PSM), *We Had a Girl Before You* (PSM), *Little Women* (ASM), *The Legend of Sleepy Hollow* (ASM), *Miss Holmes Returns* (ASM), *All is Calm* (ASM), and *The 39 Steps* (ASM). Other credits include *Deathtrap* (ASM), *Man of La Mancha* (ASM), *Pride and Prejudice* (ASM), *A Year with Frog and Toad* (Ladybird, Mouse, Young Frog), and *The 25th Annual Putnam County Spelling Bee* (Olive). Insta: @thefitzburger.

DEIRDRE GERRARD she/her (Costume Designer) is thrilled to be back designing for Greater Boston Stage. Previous credits include designing *Guys and Dolls*, *Clue: On Stage*, *The Legend of Sleepy Hollow*, *Popcorn Falls*, *Miss Holmes Returns*, *Incident At Our Lady of Perpetual Help*, *The Moors*, *Miracle on 34th Street*, *Onegin*, *Miss Holmes*, *Jonah and the Whale*, *Neville's Island*, *Seminar*, *Distant Music*, and *Buddy Cop 2* (Greater Boston Stage Company); *Reparations* (Gloucester Stage Company); *Cabaret* (Midcoast Actor's Studio), *Romeo and Juliet* and *Macbeth* (Bay Colony Shakespeare), *The World Goes 'Round* and *Frankie and Johnny in the Clare de Lune* (New Rep); *Faustus* (Wax Wings Productions); *Twelfth Night* and *Rosencrantz and Guildenstern Are Dead* (Roxbury Latin Summer Festival Theater); *Cunning Little Vixen* (Boston Opera Collaborative); *Treemonisha* (Missing Links); *Hamlet* (New Rep On Tour); and *Cocktail Time in Cuba* (Brandeis Theater Co. in cooperation with Primary Stages, N.Y.), as well as *Bye Bye Birdie*, *Honk!*, *Legally Blonde*,



WORKING TOGETHER TO MOVE OUR COMMUNITIES FORWARD.

Salem Five is dedicated to helping our region thrive by understanding and supporting what matters most. We are thrilled to support this and celebrate the important mission of **Greater Boston Stage Company**.

SalemFive®

CHARITABLE FOUNDATION

salemfive.com | 800.850.5000

Member FDIC



Assassins, Oklahoma!, Cats and Once on This Island (Young Company).

SAM KIFF he/they (Production Assistant) graduated with his Bachelor of Arts degree in technical theatre from Salem State University. Previous credits include: *Guys and Dolls*, *All Is Calm: The Christmas Truce of 1914*, and *Clue On Stage*, (Greater Boston Stage Company), *A Wrinkle in Time* (Wheelock Family Theatre at Boston University).

MARK LINEHAN he/him (Dramaturg/Assistant Director) Having appeared on stage at GBSC over a dozen times, Mark is thrilled to be on the production team's side of the table, serving this exceptional cast. After six years as an educator at Somerville High School, Mark spent eleven years as a guide leading tours on Boston's historic Freedom Trail. Additionally, Mark has been on numerous episodes of *Mysteries at the Museum* on Travel Channel as a historical commentator. Mark is a member of the Malden Historical Society, as well as a member of Malden's 375th Anniversary Committee and a former co-chair of the Malden Cultural Council. He currently works as a research assistant to Dr. Jason Ur at Harvard University, studying New England's oldest burying grounds. Images and video of Mark in colonial costume can be seen on Gov. Maura Healey's Instagram.

ADELAIDE MAJESKI she/her (Props Master) works as a freelance stage manager & theatre artist. She has worked for Commonwealth Shakespeare Company, Stage 284, Marblehead Little Theatre, the Boston Early Music Festival, Rebel Shakespeare Company, Walnut Hill School for the Arts, The Fayerweather Street School and others. She also serves as the House Manager for Salem State University's Theatre and Speech Department. Adelaide would like to thank everyone who let her borrow a mélange of props

for this production!

KATY MONTHEI she/her (Scenic Designer) is a scenic designer/draftsman based in Brooklyn. She has worked on Broadway and off Broadway in New York as well as several regional theaters in New England. Credits at GBSC include, *Dial M for Murder*, *Onegin*, *Miss Holmes*, *Jonah and the Whale*, *Legend of Sleepy Hollow*, and *Lobster Girl*. Katy graduated with an MFA from Brandeis. katymonthei.com.

TYLER ROSATI+ he/him (Assistant Director/Choreographer) is a proud alumnus of The Young Company and a former Director of Education at Greater Boston Stage Company. GBSC credits: *The Play That Goes Wrong* (Director), *Titanish* (Director), *Clue* (Assistant Director), *It's a Wonderful Life* (Co-Director), and *Altar Boyz* (Co-Director). With The Young Company, Tyler has directed over 25 productions with highlights including: *Sweeney Todd*, *Firebringer*, *Seussical*, *Jack and the Giant*, and *24 Hour Legally Blonde*. Tyler has spent the last 9 years as an actor, producer, director, and choreographer for *Shit-Faced Shakespeare*. Tyler will next be directing *Annie* and *Murder for Two* here in 2026! Much love to the powerhouse team that helped make this giant show possible!

MARSHA SMITH* she/her (Production Stage Manager) is from a small farm in southern NH and earned her bachelor's degree from Emerson College. She has been working professionally in and around Boston, with a few brief stops in NYC and beyond, for over 20 years. Marsha loves her work and thanks her friends and family for the lifetime of support they have given her.

WEYLIN SYMES he/him (Director) is Greater Boston Stage Company's Producing Artistic Director. Weylin Symes has been extensively involved in the renovation of Greater Boston

Stage's building since 1999. Over the past 25 years, he has overseen the growth of the theatre into one of Boston's five largest performing arts organizations, as recognized by the *Boston Business Journal*. After serving as the theatre's first Artistic Associate, Weylin assumed the role of Artistic Director in 2003 and was named Producing Artistic Director in 2007. In his time at GBSC, Weylin has directed over 30 productions for the Mainstage and The Young Company and adapted several pieces for performance on GBSC's stage, including *The Old Man and the Sea*, *Dracula*, and *It's a Wonderful Life*. He also wrote *Last Night at Bowl-Mor Lanes* and the story and book for the original musical *Lobster Girl*, both of which premiered on GBSC's stage. In 2013, he completed an adaptation of the Grimm Fairy Tale *The Handless Maiden* for performance by The Young Company at GBSC.

MEGHAN WARD (Production Manager) has been working as a theatre and events professional since the early 2000s. In addition to nearly two decades of work with the Greater Boston Stage Company, she has led countless other successful productions in the New York City and New England regions. Meghan often shares her experience in the performing arts by training and supporting young performers and technicians and works to promote diversity and inclusivity in all aspects of stagecraft. Meghan holds an MFA in Stage Management from Rutgers University, and a BA in Theatre from Keene State College.

COREY WHITEMORE He/Him (Lighting Designer) is excited to be designing *Founding F%!#ers* with Greater Boston Stage Company. He has designed shows with Columbia University, Salem Theatre Company, New York University, and North Shore Music Theatre. He is also frequently an Associate Lighting Design-

er to Rich Latta at Ogunquit Playhouse. Corey received his MFA at New York University and his BFA at Salem State University. cmwhitemore.com.

SPECIAL THANKS

Greg Nelson
Matthew Brenton
Timothy Fontaine
Joshua Heath
Sami Parazin
Isaac Mishkit
Isabelle Samuals
Bryan Ward

* Member of Actor's Equity Association
Member of SSDC
^ member of IATSE/USA
+Young Company alumni

ACTORS' EQUITY ASSOCIATION (AEA) was founded in 1913 as the first of the American actor unions. Equity's mission is to advance, promote and foster the art of live theatre as an essential component of our society. Through its agreement with Equity, this theatre has committed to the fair treatment of the actors and stage managers employed in this production. AEA is a member of the AFL-CIO and is affiliated with FIA, an international organization of performing arts unions. For more information, visit actorsequity.org.



GREATER BOSTON STAGE COMPANY

SEASON
25
BOSTON STAGE

LITTLE SHOP OF
HORRORS

DIRECTED BY: ILANA RANSOM TOEPLITZ

JUNE 6-29 2025

395 MAIN STREET. STONEHAM MA. 02180

BOOK BY: HOWARD ASHMAN MUSIC BY: ALAN MENKEN LYRICS BY: HOWARD ASHMAN

This production of Little Shop of Horrors is presented through special arrangement with Music Theatre International (MTI). For more information, visit www.mti-show.com. Logo and Postal Design courtesy of Stephen Menard Design (2024)

BOARD OF TRUSTEES

Shanna Cahalane, CHAIR
Daria Niewenhous, MA, JD, VICE-CHAIR
Robert DiBella, TREASURER
Melodie Wing, SECRETARY

Joan Cassidy
Carolyn Saxon

Aricia Symes-Elmer
Eric Bergstrom

Kiera McNelis Shaw +

STAFF

MANAGEMENT

Weylin Symes, PRODUCING ARTISTIC DIRECTOR
Heather Mell, MANAGING DIRECTOR

FINANCE

Reliant Accounting LLC, BOOKKEEPER

EDUCATION AND ARTISTIC

Morgan Flynn, EDUCATION MANAGER
Autumn Blazon-Brown+, EDUCATION AND ADMINISTRATIVE ASSOCIATE
Meghan Ward, PRODUCTION MANAGER
Ryan Natcharian, ASSISTANT PRODUCTION MANAGER.

MARKETING

Bryan Miner+, DIRECTOR OF MARKETING AND PHILANTHROPY
Ceit Zweil, GRANTS COORDINATOR AND PHILANTHROPY OPERATIONS ASSOC.
Paul Luther, BOX OFFICE LEAD & GROUP SALES COORDINATOR
Filomena Cunha, HOUSE MANAGER & CONCESSIONS SUPERVISOR

BOX OFFICE STAFF

Jared Deamaral, Michael DeFillippi, Camilla DeSano, Luna DeSano, Sophia Enokian,
Fran Foti, Robert Foti, Jacke Kenney, Carola Roeder, Steve Roeder, Mykael Rosa+
and Jonathan Santoro+

LAND ACKNOWLEDGEMENT

We acknowledge that our land is located on the traditional territories
of the Wampanoag and the Massachuset peoples.

+The Young Company at Greater Boston Stage Company alumni

THANK YOU TO OUR GENEROUS DONORS!

All of us at Greater Boston Stage Company are thrilled to be making theatre for our community. We couldn't do it without you.

The following list represents gifts made to Greater Boston Stage Company between March 1, 2024, through April 28, 2025.

CORPORATE, GOVERNMENT, AND FOUNDATION SUPPORT

SILVER SEASON SPONSORS

MA Office of Travel and Tourism
StonehamBank
Stoneham Motor Co. - Platinum Show Sponsor for *Little Shop of Horrors*
Symes Family Charitable Foundation

FLAGSHIP SEASON SPONSORS (\$25,000+)

Salem Five Charitable Foundation
The Shubert Foundation

PLATINUM SPONSORS (\$10,000-\$24,999)

Bridgeton Properties*
The Savings Bank - Show Sponsor for *The Irish and How They Got That Way*

GOLD SPONSORS (\$1,000-\$9,999)

100 Women Who Care North of Boston
American Online Giving^
Bank of America Foundation^
Boston Celtics Shamrock Foundation*
Gaetano's Restaurant
Global Atlantic Foundation
Gravestart Foundation
Jackson Lumber & Millwork*
Melrose Coop Foundation
Northern Bank and Trust
Rapid Liquors*
UBS - Pioneer Wealth Management
Westminster Barrington Foundation

CORPORATE FRIENDS (\$100-\$999)

Amore Pizza Stoneham*
Cambridge Savings Charitable Foundation
Mystic Valley Elder Services
Nobility Hill Tavern*

Parker Hannifin
Pizza Mia*
Rang Indian Bistro*
Stoneham Chamber of Commerce
Stop & Shop
The Stones Common House & Kitchen*
The Triple T Foundation
United Way of MA Bay and Merrimack Valley^

GOVERNMENT SUPPORT

Massachusetts Cultural Council
Burlington Cultural Council
Medford Arts Council
Melrose Cultural Council
North Reading Cultural Council
Peabody Cultural Council
Reading Cultural Council
Stoneham Cultural Council
Wakefield Arts Council
Wilmington Cultural Council

Special thanks to State Senator Jason M. Lewis's and State Representative Michael Day's offices.

THE YOUNG COMPANY SEASON SPONSOR (\$15,000)

Adelaide Breed Bayrd Foundation

THE YOUNG COMPANY FUND-A-NEED SPONSOR (\$2,500)

Reading Cooperative Bank Charitable Foundation

* In-Kind donations

^ Employee Matching Gift programs



THE UMBRELLA
ARTS CENTER

TheUmbrellaArts.org
40 Stow Street, Concord



THE SPITFIRE GRILL

Based on the beloved film that took home the Audience Award at The Sundance Film Festival, this heartwarming folk musical reminds us all about the resilience of the human spirit, the magic of new beginnings, and the power of community.

"Soulful... the amiable country-flavored tunes and lyrics are rendered with the kind of conviction and expertise that make them transcendent... sheer nourishment."

- New York Magazine

APR 25-MAY 18
MAIN STAGE THEATER 144

BOOK & MUSIC BY
JAMES VALCQ

LYRICS & BOOK BY
FRED ALLEY

BASED ON THE FILM BY
LEE DAVID ZLOTOFF

DIRECTED BY
ILYSE ROBBINS

The Spitfire Grill is presented by arrangement with Concord Theatricals. concordtheatricals.com



AN EVENING WITH
**TITUSS
BURGESS**

Two nights only in the intimate 350-seat, state-of-the-art theater: star of TV's *Unbreakable Kimmy Schmidt* & Broadway's *Oh, Mary!*

MAY 30 & 31, 8PM
MAIN STAGE THEATER 144



INDIVIDUAL DONORS

Marquee Producer (\$25,000+)

Anonymous

MARQUEE CONTRIBUTOR (\$10,000-\$24,999)

Anonymous

Joan Cassidy* and The Cassidy Family

MARQUEE ENTHUSIAST (\$1,000-\$9,999)

Jess Adams

Cathy Alexander

Andrea and Eric Bergstrom*

Michael and Shanna Cahalane*

James Calabrese

Peter and Lynne Cameron

Darrin and Lori Courtney

Robert DiBella*

Nick DiCiaccio and

Marguerite Shepard-DiCiaccio

In Honor of Jan Houghton

Wes and Sandy Elmer

Paula Falzone

Timothy E. Finn

The Flagg Family

James and Sharon Foley

Joan Ford Mongeau and Peter Mongeau

Pamela Hartman

Janice Houghton

The Kennedy Family

Paul Marcheisiani

Daniel McDuffie

Mary Miner

Robert and Elizabeth Morin

Daria Niewenhou* and Michael Rickley

Lowell Partridge

Mr. & Mrs. Charles Przyjemski

Sandra Reinecke

Marsha Rosselli and Jim Driscoll

Carolyn Saxon*

The Silk Family

Gavin and Denise Symes

Aricia Symes-Elmer* and the Elmer Family

Ken Stack and Karen Vigurs-Stack

Meghan and Bryan Ward

Donna M. Weiss

Melodie Wing* and David Szabo

The Zweil Family

ENTHUSIAST (\$250-\$999)

Anonymous x2

Brandon Affeldt and Carissa Guglietta

David and Elizabeth Avery

Sandra and Ronald Avola

Dorothy Bergold

John and Mary Lou Bracciotti

Mary Ellen Burgess

Todd Burne

William Burns

Anna Chelton

Rich and Judy Clark

State Representative Michael Day

Albert DeBueriis

Julie DeLillo

John DePinto

Joanne Dimambro

Phil and Tricia DiPietro

Steve and Nancy DiTullio

Ann Doherty and James Chalke

Peter Haydu and Dona Sommers

Badrieh Edalatpour

Ellen T. Finneran

Kyla Fullerton and Family

Frank Furnari and Thomas Wales

Teresa Gallinaro

Nancy Ghareeb

Ann Marie Giovino

Ron and Heather Grasso

Wendy Donna Grose

Nancy DeCaro Haley

The Estate of Sheila Halloran

The Hampson Family

Bill and Carol Hayes

Sarah J Consulting

Susan and Michael Kiewra

Patricia Kilty

William and Linda Kimball

Rose Koch

Paul Lacey

Sally and Steve Lamb

Andrew and Sharen Leonard

Christine Leslie

Cal Gals Nan and Sarah

Stephen and Dorothy Maio

Matz family

Edward and Lori McGrath

Beth and Brian McNelis

Gary and Tina Mell

Katy Monthei and Ilya Finkler

Marge Montrone

Sarajane

Max Murphy

Piper and Aisling Murray

Sandy Nagler and Scott Hamberg

Nicole and Adrian Nial

Jim and Lisa Oosterman

Matthew and Diana Overlan

SEASON 26 PREVIEW

FEATHERBABY

*A bird with a bad
attitude and a
heart of feathers!*

September 12-28, 2025

AN IRISH CAROL

*Christmas spirits, Irish
humor, and a holiday
to remember.*

December 5-21, 2025

WHAT THE CONSTITUTION MEANS TO ME

*A personal journey
through history, heritage,
and the fight for change.*

April 10-26, 2026

MURDER FOR TWO

*One murder.
Two actors. Six suspects.
And one piano!*

Oct. 24 - Nov. 9, 2025

WAIT UNTIL DARK

*In the shadows,
the truth will
come to light.*

March 6-22, 2026

ANNIE

*The timeless tale of
resilience, joy, and
the power of tomorrow.*

May 29 - June 28, 2026

Pagliarulo Family
 Betsy Peck
 Wendy Pirsig
 Honey Lee
 Dianne Rice
 Mary Roach
 The Santoro Family
 In Honor of Patricia Kilty
 John Shaw and Kiera McNelis Shaw*
 Nicole Solari
 Anthony Speziale
 Sulloway Family
 Tina Szoka
 Judith Terrazano
 Oren and Noah Walker-Gilmore
 Susan Weiner
 Cheryl and Robert Werlin
 Robert Wilson
 Nathan, Amanda, Nate, and Sammy Young
 Elizabeth and Tuggelin Yourgrauy
 Stephen Zubricki, IV, and
 Autumn Blazon-Brown

Fan (\$100-\$249)

Anonymous x15
 Mark Cardono and Tracy Sioussat
 Claudia Arnoff
 Jim Arnold and Krista Macari
 Julie Barnes
 Bob and Patricia Berens
 Raymond and Joan Bird
 Norman Bitsoli
 Sarah Bixler and Christopher Tonkin
 Jim, Lauren, Grace, and James
 In honor of S&T
 A. Kathryn Butler
 Brendan and Lindsey Chisholm
 Brendan and Jane Connell
 Jeanne Cotter
 Donna Dickie
 Dr. Bruce Doyle
 Susan Finn
 Mary Fiore-Godes
 Jackie Fitzgerald-Boyd
 In memory of Marjorie Patten <3
 Jackie Green
 Lois Groves
 Kathy Habeeb
 Susan Hegel
 Philip Higdon and Linda Johnson
 Rose Howard
 Lisa Killeen
 Robert Lang
 Mark and Karen Leff
 Cris Logan
 Jim and Theresa Markiewicz
 Susan McClory
 Paul and Carolyn McCluskey

Nancy Meagher Mills
 Linda Morey
 Coogan Moyer
 William Murphy and Maryellen Perrotta
 Judith Murray and James Pidacks
 Pat Nugent
 Stephen and Margaret Ober
 John and Margaret O'Keefe
 Mary Parr
 Joan Lemire and John Peterson
 Lee and Marion Phalen
 Michael and Donna Pisari
 Bob and Mary Ann Quinn
 Linda Reppucci
 Richard and Jean Roketenetz
 Sheila Ryder
 Sid and Marion Schweiger
 Stephen Senna
 Maria Sentance
 Faith Skipper
 Paula Spizziri
 Martha Stearns
 Laura Stern
 Denis and Marnie Stratford
 Strong Family
 Jill Tapper
 Ava Taylor
 Wendy Tirck
 Bruce and Kathy Varney
 Brian and Deb Walsh

* Indicates GBSC Board of Trustees



DONATIONS

Your philanthropic support is crucial to GBSC's continued success. Only 60% of the annual operating budget is covered by ticket sales. The theatre relies on the generosity of our sponsors and donors to provide the high quality professional theatre and arts education programs you have come to expect. From corporate sponsorships to individual gifts, there are so many different ways you can support GBSC. For more information on how you can make a gift, call Bryan Miner at 781-587-7907 or give online at greaterbostonstage.org.

CONTACT INFORMATION

395 Main Street
Stoneham, MA 02180
Box Office: 781-279-2200
Administrative Office: 781-279-7885
boxoffice@greaterbostonstage.org
greaterbostonstage.org

GROUPS

Special discounts are available for groups of 10 or more. Groups are also invited to use the gallery for exclusive pre or post-show receptions. To schedule your next event, contact Paul Luther at 781-587-7912 or paul@greaterbostonstage.org.

AGE APPROPRIATENESS

We rarely suggest appropriate ages for our productions. We assume all children are different and that guardians are the best judges for what is appropriate. We are happy to provide as much information as possible to help make these decisions. If you have questions, please ask the Box Office.

ACCESSIBILITY



Greater Boston Stage Company is committed to making theatre accessible to everyone. Accessible Seating: Patrons with a wheelchair and/or oxygen tank, or requiring other assistance, should inform the Box Office in advance so that accessible seating can be reserved.



Assisted listening devices are available at the Box Office at no charge. These devices have been made possible by the generous support of Barile Family Funeral Homes.



Babes in arms are not permitted and a seat must be reserved for every guest. A limited number of booster seats are available at the Box Office.



Cost should not be a barrier to enjoying the arts! Information is available at the box office about the theatre's EBT Card to Culture, Frugal Friday, Savvy Saturdays, and 25 for \$25 discounts. The theatre is also pleased to offer scholarships & attendance support for education programs through Fund-A-Need.

GENERAL POLICIES

The use of cameras and recording devices in the theatre is strictly prohibited.

Please turn off all pagers, cellular phones, watch alarms, and other noisemaking equipment when in the theatre.

In consideration for performers and other audience members, all latecomers will be seated at the discretion of the management in order to minimize distractions in our intimate theatre space.

Greater Boston Stage Company reserves the right to ask any patron causing a disturbance to leave the premises without refund.

SUMMER FESTIVAL 2025

JULY 7 - AUGUST 10



LEGALLY BLONDE
The Musical



GRADES 4-12

OVERTURE 2025

GRADES 1-4





Celebrating 25 Years!



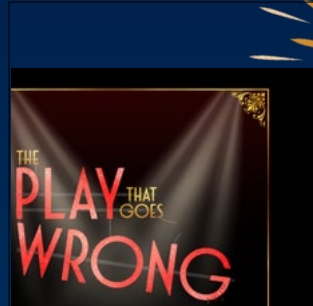
DINNER FOR ONE
November 1 - 17, 2024



WINTER WONDERETTES
Nov. 29 - Dec. 22, 2024



THE IRISH AND HOW THEY GOT THAT WAY
Feb. 28 - March 16, 2025



THE PLAY THAT GOES WRONG
March 28 - April 19, 2025



FOUNDING F%!#ERS (EFFERS)
May 2 - 18, 2025



LITTLE SHOP OF HORRORS
June 6 - 29, 2025