



A NOTE FROM THE DIRECTOR

Dear Friends,

Casting is undoubtedly one of the most important parts of the process of creating theatre. The people we choose to tell the story of a play truly make it their own and often it can be difficult to choose which version of a story or a character we want to tell. When casting *Wait Until Dark* I fell in love with two different possible versions of this play represented by two different actors and, instead of picking one, I decided to try something unique and offer our audiences the option of experiencing both versions by having two actors alternate playing Susan throughout the run of the show. Jenny S. Lee and Eliza Barmakian each bring a unique understanding and lived experience to the role of Susan and it has been an absolute joy in the rehearsal process to learn from both of them. It has been especially gratifying to see the generosity with which Jenny and Eliza discuss and discover where their takes on Susan converge and where they differ due to their unique perspectives. And having two actors in the room at all times both working on portraying this iconic role has allowed us to find even more layers of depth and detail for Susan than we might have otherwise.

For the other actors in the show, the fact that from night to night they will be interacting with a different Susie, brings a unique freshness and vitality to every performance.

We had an incredibly fun time preparing this dark and twisty thriller for you with this remarkable cast and team of designers.

Thanks, as always, for supporting local non-profit professional theatre. And keep an eye out for our announcement of Season 27! Hand to God it promises to be a Wonderful season full of mystery, magic, and Shear Madness (yes, those are hints).

Weylin Symes



GREATER BOSTON STAGE COMPANY PRESENTS

WAIT UNTIL DARK

By Frederick Knott
Adapted by Jeffrey Hatcher

PRODUCING ARTISTIC DIRECTOR
Weylin Symes⁺

DIRECTOR
Weylin Symes⁺

SCENIC DESIGNER
Katy Monthei

LIGHTING DESIGNER
Jeff Adelberg[^]

COSTUME DESIGNER
Deirdre Gerrard

SOUND DESIGNER
Caroline Eng[•]

PROPERTIES DESIGNER
Emily Allinson

FIGHT CHOREOGRAPHER
Naomi Kim

ACCESSIBILITY CONSULTANT
Sam Gould Kriveshko

PRODUCTION STAGE MANAGER
Shauwna Dias Grillo^{*}

ASSISTANT STAGE MANAGER/FIGHT CAPTAIN
E.D. Fitzgerald^{*}

PRODUCTION MANAGER
Meghan Ward

PRODUCTION ASSISTANT
Kit Verweij

SCENIC BUILDER
Misfit Toys LLC.

SCENIC CHARGE
Kate Bell

^{*}Member of Actor's Equity Association

[^]Member of IATSE/USA

⁺Member of SDC

[♦]Current Young Company Member

[•]Young Company Alumni

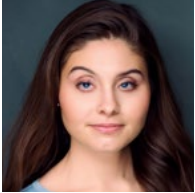
CAST AND PRODUCTION TEAM

*Member of Actors' Equity Association,
the union of professional actors and stage managers in the United States.



The use of any recording device, either audio or video, and the taking of photographs either with or without flash is strictly prohibited. Please turn off all electronic devices such as cellular phones, beepers, and watches. The use of cell phones in the theatre is prohibited.

*Eliza Barmakian and Jenny S. Lee will be alternating the role of Susan Hendrix throughout this production. Please refer to the performance calendar in this program for specific dates/times of each performer.



ELIZA BARMAKIAN*

she/her (Susan) is honored to be making her GBS debut, telling this story. After earning a B.S. in Biology, Eliza chose to chase her love of

theater and music. As a low vision actor, she hopes you leave this show loving the parts of yourself that make you unique. "Relish in your stumbles, your beauty, your resilience, and strength." Recent credits include: *An American in Paris* (Reagle Music Theatre of Greater Boston); *Anastasia* (Weston Friendly Society). Special thanks to her family and guide dog, Zinga BARKmakian.

THAIN BERTIN



he/him (Sam, US Mike/Carlino) Thain Bertin is pleased to be making his debut at Greater Boston Stage Company. A relative newcomer to the Boston area (originally honing his

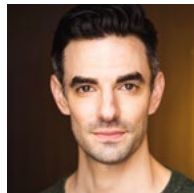
skills in the remote wilderness of Montana), recent work includes roles with the Apollinaire Theatre Company, Newton Theatre Company, Gold Dust Orphans, and Infinite Rotary Productions. When not on the stage, Thain enjoys rock climbing, laser tag (he has on two occasions been invited to participate in the Armageddon World Championships), and the writing and solving of riddles.



JENNY S. LEE*

she/her (Susan) is a Korean American actress, director, and Director of Artistic and Community Programming at CHUANG Stage. Regional: *Silent*

Sky (Henrietta Leavitt, Central Square Theatre), *Founding F%#!#ers* (Peggy Shippen & Others, Greater Boston Stage), *The Recursion of a Moth* (Chrys, Boston Playwrights Theatre), *The Hound of the Baskervilles* (Watson, Central Square Theatre), *Yellowface* (Jane Krakowski & Others, Lyric Stage). Select directing: *DOSAN: The Musical* (Seasun Theatre Artists Group), *Stories on our Streets: The Boston Chinatown Musical* (CHUANG Stage & Company One), *Emma* (AD, Actor Shakespeare Project), *The Heart Sellers* (AD, Huntington Theatre), and *John Deserves to Die* (AD) at Fresh Ink. [IG: @_jennyslee_// thejennyslee.com].



PAUL MELENDY*

he/him (Roat) is thrilled to start off 2026 theater with Greater Boston Stage. He hopes his recent turn as a mercurial, blood-drawing parrot

in *Featherbaby* has desensitized audiences enough for his murderous Roat. GBSC favorites include *Clue*, *The Play That Goes Wrong*, *Dinner for One*, and *The Legend of Sleepy Hollow* (Elliot Norton Award for Outstanding Solo Performance). Recent collaborations include *The Garbologists* (Gloucester

PLATINUM SHOW SPONSOR

Visit us for all of your
financial needs.
We've reserved a seat just for you.



Since 1869

The Savings Bank
Local. Innovative. Trusted.

Wakefield | Lynnfield | North Reading
Andover | Methuen

800-246-2009 | www.tsbdirect.bank

Member FDIC | Member DIF | Equal Housing Lender

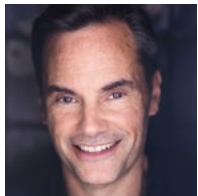


Stage Company), *A Sherlock Carol*, *The Drowsy Chaperone* (Lyric Stage Company — Elliot Norton Award nomination: Outstanding Lead in a Musical), and *A Christmas Carol*, *The Wickhams: Christmas at Pemberley* (Merrimack Repertory), to name a few. You may catch Paul on your local TV screens in commercials for Manchester Airport, Maine Spirits, VistaPrint, or season 4 of Plymouth Rock Assurance's *The Bostonians*, or streaming on HBO in the first season of "Julia". Film credits include "Love, Weddings, & Other Disasters", "Father of the Year", "Unfinished Business", "The Makeover", "The Pink Panther Deux", and the upcoming Amy Adams film "At the Sea". To contact Paul, please visit paulmelendy.com. Thank you for your gracious attendance!



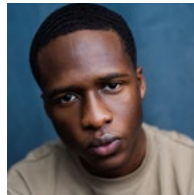
AMALIA TONOGBANUA*

she/her (Gloria)
Amalia loves to perform! She's excited to play Gloria in *Wait Until Dark*, her Mainstage debut. She has also performed in three Young Company Winter Festival productions at GBSC, including *Beetlejuice, Jr.*, *Alice in Wonderland, Jr.*, and *Honk, Jr.* In the past few years, she has also performed in musicals at Arlington Children's Theater and the New England School of Performing Arts. She was recently in the chorus of the *Midwinter Revels: A Scandinavian Story for Christmas*. In the spring, she will play Dorothy in *The Wizard of Oz* in her school's drama club. She thanks her family for their support!



BILL MOOTOS* he/him (Carlino) is delighted to return to GBSC, where he most recently appeared in *Dial M For Murder* and *CLUE*. Bill appeared in Trinity Repertory's *La*

Tempestad, Umbrella Stage Company's *Network* (Eliot Norton Award nominee), and *A Christmas Carol* at The Hanover Theatre. Regional credits include Lyric Stage, Central Square Theater, Wellfleet Harbor Actors Theatre, Shakespeare & Company, Wheelock Family Theatre, Huntington Theatre Company, Moonbox Productions, SpeakEasy Stage Company, Ivoryton Playhouse, Merrimack Repertory Theatre, Gloucester Stage, and many others. Recent film credits include "The Holdovers," "Little Women," "Boston Strangler," "Don't Look Up," and "Daddy's Home 2." Recipient of two IRNE Awards for Best Actor, National Board Member of SAG-AFTRA, and proud member of AEA.



MAMADOU TOURE*

he/him (Mike) is thrilled to make his debut with Greater Boston Stage Company. Previous stage credits include *Fat Ham* (Larry) with The

Wilbury Theatre Group and *Much Ado About Nothing* (Borachio). Film credits include "Offboarding," "Sweet Freedom," "A Grim Descendant," "Exit 17" and "God Talks to an Agnostic." Stage readings include *Write Here, Write Now* (Trinity Repertory Company) and *Dope Shorts* (Kashif Filmmaking Incubator). Upcoming work: Joe Scott in the Wilbury production of *Girl from the North Country*. He is forever grateful to his family for their unwavering support, especially his mama. Follow him on Instagram: @mamadoutoure.

***Eliza Barmakian* and Jenny S. Lee* will be alternating the role of Susan Hendrix throughout this production. See the performance calendars below.**

ELIZA BARMAKIAN* will star as **SUSAN HENDRIX** in the following performances.



Sunday	Monday	Tuesday	Wednesday	Thursday	Friday	Saturday
MARCH 1	2	3	4	5	6	7 7PM SHOW
8 2PM SHOW	9	10	11 2PM SHOW	12	13 7PM SHOW	14 7PM SHOW
15	16	17	18	19 7PM SHOW	20	21 2PM SHOW*
22 2PM SHOW*						

Audio description will be available for the **March 21 at 2pm** and **March 22 at 2pm** performances.



JENNY S. LEE* will star as **SUSAN HENDRIX** in the following performances.



Sunday	Monday	Tuesday	Wednesday	Thursday	Friday	Saturday
MARCH 1	2	3	4	5	6 7PM SHOW	7 2PM SHOW
8	9	10	11	12 7PM SHOW	13	14 2PM SHOW
15 2PM SHOW	16	17	18 2PM SHOW	19	20 7PM SHOW	21 7PM SHOW
22						



SILVER SEASON SPONSOR
PLATINUM SHOW SPONSOR



WWW.STONEHAMFORD.COM
781-438-0490

CAROLINE ENG^ • she/her (Sound Designer) is a New York based sound designer. GBSC: *Founding F-ers*, *CLUE*, *Popcorn Falls*, *The Three Musketeers*, *The Moors*, *The Salonnières*. Broadway: *Yellow Face* (Roundabout Theatre Company). Off-Broadway and Regional: *The Unknown* (Studio Seaview), *Cymbeline* (NAATCO), *Cold War Choir Practice* (Trinity Rep), *Merry Me*(NYTW), *Coriolanus* (Oregon Shakespeare Festival, Portland Center Stage), *Hurricane Diane* (People's Light), *Irishtown*(Irish Repertory Theatre), *Fences* (Shakespeare and Company), *What the Constitution Means to Me* (WAM Theatre, Berkshire Theatre Group). carolineengdesign.com

JEFF ADELBERG^ he/him (Lighting Designer) has designed 30ish productions here at Greater Boston Stage Co. Favorites include: *All Is Calm*, *The Last Night at Bowl-Mor Lanes*, *The Legend of Georgia McBride*, *She Loves Me*, *The Addams Family Musical*, *Thoroughly Modern Millie*, *Distant Music*, *Buddy Cop 2*, *Gaslight*, and all-time favorite *Guys On Ice: The Ice Fishing Musical*. Other recent work: *Our Class* and *The Dybbuk* (Arlekin Players); *Angels in America, Parts 1 & 2*, and *Hamlet* (The Gamm Theatre, RI); *Midwinter Revels* since 2010. Jeff attended the University of Connecticut and teaches at Harvard University and Boston College. Member of United Scenic Artists 829. Jeffadelberg.com.

EMILY ALLINSON she/her (Props Designer) - Merrimack Repertory Theatre: *A Christmas Carol*, *The Porch on Windy Hill*, *Where you are now*, *Misery*, *Ring of Fire*. Peterborough Players: *Noises Off!*, *Deathtrap*, *Man of La Mancha*, and all other productions since 2018. Lyric Stage Company: *Noises Off!*, *The Great Reveal*. Greater Boston Stage Company: *An Irish Carol*, *Clue*, *Dial M for Murder*, *Guys and Dolls*. Emily has been working as a props supervisor/designer and theatre technician in New England since 2017.

SHAUWNA DIAS GRILLO* she/they (Production Stage Manager) As GBSC PSM: *An Irish Carol*, *Little Shop of Horrors*, *Guys and Dolls*, *All Is Calm* (original production + remount), *Beehive*, *Clue*, *Little Women*, *Sleepy Hollow*, *Popcorn Falls*, *Ain't Misbehavin*, *Miss Holmes Returns*, *Incident at Our Lady of Perpetual Help*, and *The 39 Steps*. As Young Company stage manager: *The Sparrow*, *Frozen Jr.*, *Annie*, *Junie B. Jones Jr.*, *The Hunchback of Notre Dame*, *Sweeney Todd*, and *Alice*. ASM on many shows since 2016. She has also worked with The Barnstormers, Umbrella Stage Company, Lyric Stage Company, Wheelock Family Theatre, Reagle Music Theatre, Revels Inc., Bridge Rep, Emerson College, and Opera Del West.

DEIRDRE GERRARD she/her (Costume Designer) is thrilled to be back designing for Greater Boston Stage Company. Previous credits include designing *Guys and Dolls*, *Clue: On Stage*, *The Legend of Sleepy Hollow*, *Popcorn Falls*, *Miss Holmes Returns*, *Incident at Our Lady of Perpetual Help*, *The Moors*, *Miracle on 34th Street*, *Onegin*, *Miss Holmes*, *Jonah and the Whale*, *Neville's Island*, *Seminar*, *Distant Music*, and *Buddy Cop 2* (Greater Boston Stage Company); *Reparations* (Gloucester Stage Company); *Cabaret* (Midcoast Actor's Studio); *Romeo and Juliet* and *Macbeth* (Bay Colony Shakespeare); *The World Goes 'Round* and *Frankie and Johnny in the Clair de Lune* (New Rep); *Faustus* (Wax Wings Productions); *Twelfth Night* and *Rosencrantz and Guildenstern Are Dead* (Roxbury Latin Summer Festival Theater); *The Cunning Little Vixen* (Boston Opera Collaborative); *Treemonisha* (Missing Links); *Hamlet* (New Rep On Tour); and *Cocktail Time in Cuba* (Brandeis Theater Company in cooperation with Primary Stages, NY), as well as *Bye Bye Birdie*, *Honk!*, *Legally Blonde*, *Assassins*, *Oklahoma!*, *Cats*, and *Once on This Island* (Young Company).

WEDNESDAY MATINEE SPONSOR



YOUR LIFE DESERVES AN *Encore!*

Tired of the “intermission” at home?

Step into a community designed for a spectacular second act!

From gourmet dining to curated social events, we provide the perfect backdrop for your best years yet!

ASSISTED LIVING ✨ **MEMORY CARE**

Take the leading role &
Come visit us!

(781) 435-1958



THE Arbors[®]

Assisted Living Residential Communities

At Stoneham

E.D. FITZGERALD* they/them (Assistant Stage Manager/Fight Captain) Past GBSC credits include *Murder for Two* (PSM), *An Irish Carol* (ASM), *Dinner for Two* (PSM), *The Irish and How They Got That Way* (ASM), *Founding F**ers** (ASM), *Dial M for Murder* (ASM), *Titan-ish* (ASM), *We Had a Girl Before You* (PSM), *Clue* (ASM), *Little Women* (ASM). Peterborough Players credits include *Native Gardens* (ASM), *Hay Fever* (ASM), *Man of La Mancha* (ASM), *Deathtrap* (ASM), and *The Emperor's New Clothes* (PSM). Other credits include *A Year with Frog and Toad* (Ladybird, Mouse, Young Frog), and *The 25th Annual Putnam County Spelling Bee* (Olive). insta: @thefitzburger

NAOMI KIM she/her (Fight Director) is a Boston-based actor and combat choreographer with training from theatre and choreography schools in Boston, New York, and London. Recent fight direction credits include *La Linda Tierra Que Bunco Yo* (Teatro Chelsea), *Macbeth* (Co-Fight Director, Actors' Shakespeare Project), and *A Midsummer Night's Dream* (Assistant Fight Director, ASP). She is thrilled to be working with GBSC and to everyone for the warm welcome. @naomi.a.kim | www.naomikim.actor

KATY MONTHEI she/her (Scenic Designer) is a scenic designer/draftsman based in Brooklyn. She has worked on Broadway and off-Broadway in New York as well as several regional theaters in New England. Credits at GBSC include *Dial M for Murder*, *Onegin*, *Miss Holmes*, *Jonah and the Whale*, *Featherbaby*, and many others. Katy graduated with an MFA from Brandeis. katymonthei.com

WEYLIN SYMES+ he/him (DIRECTOR) Weylin was extensively involved in the renovation of Greater Boston Stage's building in both 1999 and 2025, and over the past 25 years has overseen its growth into one of the region's leading performing arts institutions. After serving as the

Theatre's first Artistic Associate, he became Artistic Director in 2003 and Producing Artistic Director in 2007. At GBSC, Weylin has directed more than 25 Mainstage productions and written or adapted several works for the company's stage, including *The Old Man and the Sea*, *Dracula*, *It's a Wonderful Life*, *Lobster Girl*, and *Last Night at Bowl-Mor Lanes*. Favorite directing projects include *Clue*, *The Legend of Sleepy Hollow*, *Richard Nelson's Apple Family Plays*, *Seminar*, *Distant Music*, *I Capture the Castle*, *Buddy Cop 2*, *Gaslight*, *Strangers on a Train*, *Marathon*, *A Prayer for Owen Meany*, *The Violet Hour*, *The Dazzle*, and *The Girl in the Frame*. Before joining GBSC, Weylin directed several Boston-area productions, including Ibsen's *John Gabriel Borkman* and Joseph Heller's *We Bombed in New Haven*. He also spent a year in Albuquerque training law enforcement personnel through role-play-based instruction. Weylin is a graduate of New York University's Tisch School of the Arts (Experimental Theatre Wing).

KIT VERWEIJ they/them (Production Assistant) is excited to be working with Greater Boston Stage Company again after working on The Young Company's production of *Legally Blonde*. They are a recent graduate from Syracuse University with a B.F.A in Stage Management. Favorite credits include *Pandora's Suitcase* with Syracuse Stage, *Hoopswith Company One Theatre*, and *The Droll* with Syracuse University.

ACTORS' EQUITY ASSOCIATION (AEA) was founded in 1913 as the first of the American actor unions. Equity's mission is to advance, promote and foster the art of live theatre as an essential component of our society. Through its agreement with Equity, this theatre has committed to the fair treatment of the actors and stage managers employed in this production. AEA is a member of the AFL-CIO and is affiliated with FIA, an international organization of performing arts unions. For more information, visit actorsequity.org.



**GREATER BOSTON STAGE COMPANY
FLAGSHIP SPONSOR**



**Cummings
Foundation**

Cummings Foundation now awards at least \$50 million each year, and has awarded a total of \$600 million to date, to a wide variety of nonprofits, primarily in eastern Massachusetts.

200 WEST CUMMINGS PARK, WOBURN, MA 01801



Greater Boston Stage Company is pleased to partner with Think Outside the Vox (VOX) to offer Audio Description (AD) for Blind and Low-Vision patrons at designated performances.

VOX is an arts nonprofit that offers accessibility consulting and training for artists and institutions by centering disability culture and Deaf, Blind and disabled expertise in its services.

Audio Description is a visually crafted, strategically timed live narration of the visual elements of a show. The AD Pre-show includes descriptions of characters, set design, props, costumes, and visual references. It is broadcast via radio transmitter to patrons wearing a single headphone receiver, allowing users to listen to both onstage dialogue and the AD in real time. ThinkOutsideTheVox.org

**SHOW AUDIO DESCRIBER
Ruth Kahn**

**PRE-SHOW AUDIO DESCRIPTION MENTEE
Gwen Coburn**

**BLIND/LOW-VISION QUALITY CONTROL CONSULTANT
Mikey Rose**

**VOX ACCESSIBILITY REPRESENTATIVE
Olivia Reinebach**



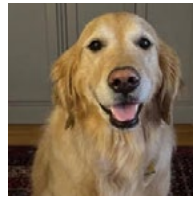
RUTH CELIA KAHN she/her (In-show Audio Descriptor) is passionate about the convergence of arts, equity, inclusion, disability, and accessibility. As an audio describer for 20+ years, Ruth is privileged to have described live performances for Blind and Low Vision patrons at Wheelock Family Theatre, The Huntington Theatre, ArtsEmerson, Broadway in Boston, Moonbox Productions, Harvard Dance Center, Boston Dance Alliance, SpeakEasy Stage Company, Commonwealth Shakespeare Company, Axis Dance, and The Weston Playhouse in Vermont. In 2020, Ruth collaborated with Our Space Our Place and the Tony Williams Dance Studio at a virtual, week-long workshop for Blind/Low Vision participants.

GWEN COBURN she/her (Pre-show Audio Descriptor Mentee) is an award-winning playwright, comedian, and performer. Her solo show *Sad Girl Songs* has toured the US, Canada, and Edinburgh Fringe, winning Best Musical and receiving honors for Artistic Risk along the way. In Boston, she performs and writes for The Nova Show, a variety comedy in residence at the Rockwell. She is thrilled to bring her love of storytelling to the audio description team for *Wait Until Dark*.

OLIVIA "VIA" REINEBACH they/she (Accessibility Coordinator for ThinkOutsideTheVox.org Olivia is an Arts & Accessibility Administrator with backgrounds in theater, dance, music and poetry. She does Audio Description, Captioning, Accessibility Coordination and Education (CHUANG Stage, Guerilla Opera/Urban Jazz Dance Company, The Theater Offensive, The Huntington, A.R.T., Open Door Theater, Commonwealth Shakespeare Company). Via has a variety of experience in creative performance and technical production roles with an emphasis in intersectional, multicultural work (Boott Cotton Mills Museum, The Dance Complex, Nelly Kate/The Boston

Public Art Triennial, Sabor Latino BU, NYU Steinhardt, Juilliard Theatre). They are the Marketing & Communications Manager for Think Outside the Vox and presents music shows at the Museum of Science Planetarium.

MIKEY ROSE they/them (Blind/Low-Vision Quality Control Expert) is a Black/queer low-vision audio describer and Blind user expert. They have a background in the performing arts and a Bachelor's in Social Work. Over the past year, Mikey has been rediscovering their love of theater through a new lens-pairing passion with expertise. Mx. Rose has worked with production companies in Boston and beyond, working on shows including Charles Dickens' *A Christmas Carol*, *Ain't No Mo'* and *The Prom*.



ZINGA BARKmakian

(Guide Dog) is the most lovable, kind-hearted, and intelligent girl in the world. She is a guide dog who helps her

handler, Eliza Barmakian (Susan Hendrix), navigate the world with confidence. You will not see Zinga on stage because Eliza has taken time to learn the layout of the set so that she feels comfortable moving about it without the aid of a mobility device. This is Eliza's preference, but it is not a standard or requirement. She wants to encourage people to use whatever devices would be helpful to them at any time. GBSC gave Eliza the option to use her dog and/or cane on stage, but she decided not to, because that was what felt most comfortable to her. When Zinga is working, she wears a harness and needs to focus on the safety of her handler. When Zinga is not wearing the harness, she is off duty and loves to give hugs to everyone in sight. Zinga thanks you for attending this show and supporting her mom. Woof woof!

Your neighbors and trusted financial partners.

Who We Are

We are more than a bank, we are your neighbors. For over 135 years it has been our mission to drive financial success, encourage economic stability and improve the lives of everyone who lives and works in our community.

Learn more about us at www.stonehambank.com



SILVER SEASON SPONSOR

 **StonehamBank**

Expect more. Get more. Do more.



Member FDIC
Member DIF



STRICTLY SINATRA

WITH MICHAEL DUTRA AND
THE STRICTLY SINATRA BAND

MARCH 28, 2026
2:00 pm and 7:00 pm

Sway to timeless hits like "Come Fly with Me," "I've Got You Under My Skin," and "My Way." It's an unforgettable evening of classic Sinatra tunes that will leave you singing all the way home!



STUDENT MATINEES:
March 26 and 27
at 9:30am and 11:45am
PUBLIC PERFORMANCE:
March 27 at 7pm

ILLUSTRATION: THEATER WORKS!



WORKING TOGETHER TO MOVE OUR COMMUNITIES FORWARD.

Salem Five is dedicated to helping our region thrive by understanding and supporting what matters most. We are thrilled to support this and celebrate the important mission of **Greater Boston Stage Company**.

FLAGSHIP SEASON SPONSOR

SalemFive[®]

CHARITABLE FOUNDATION

salemfive.com | 800.850.5000

Member FDIC



BOARD OF TRUSTEES

Daria Niewenhous, MA, JD, CHAIR
Melodie Wing, VICE-CHAIR
Kiera McNelis Shaw●, TREASURER
Aricia Symes-Elmer, SECRETARY

Eric Bergstrom
Kathryn Boyle

Shanna Cahalane

Joan Cassidy
Nancy Sterling

STAFF

MANAGEMENT

Weylin Symes, PRODUCING ARTISTIC DIRECTOR
Heather Mell, MANAGING DIRECTOR

FINANCE

Diane Amato, FINANCE MANAGER

EDUCATION AND ARTISTIC

Autumn Blazon-Brown●, DIRECTOR OF EDUCATION
Meghan Ward, PRODUCTION MANAGER
Kit Verweij, ASSISTANT PRODUCTION MANAGER.

Daniel Begin●, Associate Director of Education and Artistic Associate

MARKETING

Bryan Miner●, DIRECTOR OF MARKETING AND PHILANTHROPY
Ceit Zweil, GRANTS COORDINATOR AND PHILANTHROPY OPERATIONS ASSOC.
Emily Monroe, BOX OFFICE MANAGER

Filomena Cunha, HOUSE MANAGER & CONCESSIONS SUPERVISOR

BOX OFFICE STAFF

Noah Braunstein, Michael DeFillippi, Camilla DeSano, Nathen Elmer●, Sophia Enokian, Fran Foti, Robert Foti, Jacke Kenney, Kara Nail, Alexandria Nance, Carola Roeder, Steve Roeder, Jonathan Santoro●, Gwendolyn Symes

LAND ACKNOWLEDGEMENT

We acknowledge that our land is located on the traditional territories of the Wampanoag and the Massachusett peoples.

●The Young Company at Greater Boston Stage Company alumni

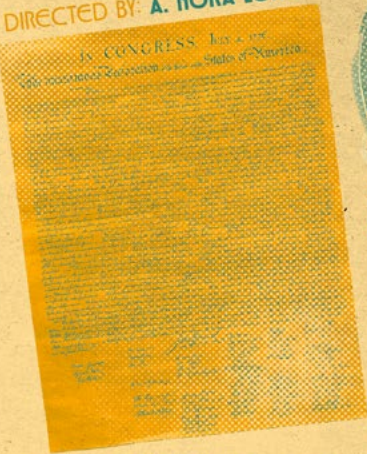
GREATER BOSTON STAGE CO.



395 MAIN STREET
STONEHAM MA, 02180



DIRECTED BY: A. NORA LONG



APRIL
10-26



We the People

WHAT the CONSTITUTION MEANS to ME

BY: HEIDI SCHRECK

This production of WHAT THE CONSTITUTION MEANS TO ME is produced through special arrangement with Concord Theatricals. For more information, visit www.concordtheatricals.com.
Poster and Logo courtesy of Stephen Marand Design (2025).

THANK YOU TO OUR GENEROUS DONORS!

All of us at Greater Boston Stage Company are thrilled to be making theatre for our community. We couldn't do it without you.

The following list represents gifts made to Greater Boston Stage Company between December 3, 2025 through March 2, 2026

CORPORATE, GOVERNMENT, AND FOUNDATION SUPPORT

SILVER SEASON SPONSORS

MA Office of Travel and Tourism
StonehamBank
Stoneham Motor Co.
- Platinum Show Sponsor for *Annie*
Symes Family Charitable Foundation

FLAGSHIP SEASON SPONSORS (\$25,000+)

Cummings Foundation
Salem Five Charitable Foundation
The Shubert Foundation

PLATINUM SPONSORS (\$10,000-\$24,999)

Bridgeton Properties*
Melrose Cooperative
Charitable Foundation
The Savings Bank - Show Sponsor
for *Wait Until Dark*

GOLD SPONSORS (\$1,000-\$9,999)

100 Women Who Care Boston North
The Arbors at Stoneham
- Wednesday Matinee Sponsor
American Online Giving Foundation, Inc.^
Bank of America Foundation^
Boston Celtics Shamrock Foundation*
charterUP
Gaetano's Restaurant
Global Atlantic Foundation^
Jackson Lumber & Millwork*
Rapid Liquors*
Triple T Foundation
UBS - Sponsor for 25th Anniversary Gala
Westminster Barrington Foundation

CORPORATE FRIENDS (\$100-\$999)

Amore Pizza Stoneham*
Christine's Sweet Shoppe & More
- Winter Festival Sponsor
The Daily Scoop
- Summer Festival Sponsor
Harvest Catering
Nobility Hill Tavern*
Pizza Mia*
Rang Indian Bistro*
Stoneham Chamber of Commerce
The Stones Common House & Kitchen*
WBUR

GOVERNMENT SUPPORT

Mass Cultural Council
Burlington Cultural Council
Medford Cultural Council
Melrose Cultural Council
Peabody Cultural Council
Stoneham Cultural Council
Wakefield Arts Council
Wilmington Cultural Council

Special thanks to State Senator Jason M. Lewis's and State Representative Michael Day's offices.

THE YOUNG COMPANY SEASON SPONSOR (\$15,000)

Adelaide Breed Bayrd Foundation

THE YOUNG COMPANY FUND-A-NEED SPONSOR (\$2,500)

Reading Cooperative Bank
Charitable Foundation

* In-Kind donations

^ Employee Matching Gift programs

INDIVIDUAL DONORS

The following list represents gifts made to Greater Boston Stage Company between December 3, 2025 through March 2, 2026

MARQUEE PRODUCER (\$25,000+)

Anonymous

MARQUEE CONTRIBUTOR (\$10,000-\$24,999)

Anonymous

Aricia Symes-Elmer*
and the Elmer Family

MARQUEE ENTHUSIAST (\$1,000-\$9,999)

Anonymous

Joan Cassidy* and the Cassidy Family
Nick DiCiaccio and

Marguerite Shepard-DiCiaccio

Wes and Sandy Elmer

Janice Houghton

Kieran McNelis Shaw* and John Shaw

Mary Miner

Daria Niewenhous* and Michael Rickley

Marsha Rosselli and James Driscoll

The Silk Family

Mary Shaw

Denise Symes

Melodie Wing* and David Szabo

Nathan, Amanda, Nate,
and Sammy Young

ENTHUSIAST (\$250-\$999)

Anonymous x15

Michael and Shanna Cahalane*

Joan Ford Mongeau and Peter Mon-
geau

Jane Francis

Peter Haydu and Donna Sommer

Lorene Comeau

Patricia Kilty

William and Linda Kimball

Sally and Steve Lamb

Beth and Brian McNelis

Dianne Rice

Stephen Senna

Anthony Speziale

Ken Stack and Karen Vigurs-Stack

Sulloway Family

Charles Swim

April Swiniuch

Tina Szoka

The Walker-Gilmore Family

Donna M. Weiss

Cheryl and Robert Werlin

Margaret Wong and Michael Cutillo

Elizabeth and Tuggelin Yourgrauy

FAN (\$100-\$249)

Anonymous x26

John Bracciotti

Mark Cardono and Tracy Sioussat

The DePalma Family

Dr. Bruce Doyle

Paula Falzone

Eugene Giunta

Philip Higdon

Rose Howard

Robert Lang

Stephen and Margaret Ober

Pagliarulo Family

Lee and Marion Phalen

Debralee Quinn

*Indicates GBSC Board of Trustees

GBSC launched a new ticketing and donation system in July 2025! If you have made a donation and your name or acknowledgement is missing from this list, please contact Heather Mell at heather@greaterbostonstage.org, and she will be happy to correct it.

TO KILL A MOCKINGBIRD

THE UMBRELLA
ARTS CENTER

DRAMATIZED BY
CHRISTOPHER SERGEL

BASED ON THE BOOK BY
HARPER LEE

MARCH 1 - 22, CONCORD MA



TO KILL A MOCKINGBIRD IS PRODUCED BY SPECIAL ARRANGEMENT
WITH DRAMATIC PUBLISHING, WOODSTOCK, ILLINOIS



HAIRSPRAY

THE BROADWAY MUSICAL
APRIL 24 - MAY 17

BOOK BY
**MARK O'DONNELL
THOMAS MEEHAN**
MUSIC BY
MARC SHAIMAN
LYRICS BY
**SCOTT WITTMAN
MARC SHAIMAN**

HAIRSPRAY IS PRESENTED THROUGH SPECIAL ARRANGEMENT WITH MUSIC THEATRE INTERNATIONAL. ALL AUTHORIZED PERFORMANCE MATERIALS ARE ALSO SUPPLIED BY MTI WWW.MTISHOWS.ORG

**LYRIC
STAGE** FOUNDED

MAR 20 - APR 12 | LyricStage.com

617.585.5678 | Follow us!   

THE TORCH NEEDS
TO BE PASSED.
EVEN IF YOU'RE
NOT READY.

BY
PEARL CLEAGE
DIRECTED BY
JACQUI PARKER

FEATURING, FROM TOP
PATRICE JEAN BAPTISTE*
DEANNAH "DRIPP" BLEMUR
INES DE LA CRUZ*
YASMEEN DUNCAN*

(*Indicates a member of Actors Equity)





A little each month makes a big difference. Whether it's \$5, \$10, \$25, or whatever amount feels right for you, your steady support helps Greater Boston Stage Company keep our doors open, bring inspiring performances to life, and nurture the next generation of artists.

Your monthly gift gives us the foundation to plan ahead, sustain our work throughout Season 26 and beyond, and continue creating unforgettable live theatre for our community.



BECOME A MONTHLY DONOR!

CELEBRATING 25 YEARS AS A NON-PROFIT CINEMA!



40 BRATTLE ST • HARVARD SQUARE
CAMBRIDGE MA

BRATTLEFILM.ORG

DONATIONS

Your philanthropic support is crucial to GBSC's continued success. Only 60% of the annual operating budget is covered by ticket sales. The theatre relies on the generosity of our sponsors and donors to provide the high quality professional theatre and arts education programs you have come to expect. From corporate sponsorships to individual gifts, there are so many different ways you can support GBSC. For more information on how you can make a gift, call Bryan Miner at 781-587-7907 or give online at greaterbostonstage.org.

CONTACT INFORMATION

395 Main Street
Stoneham, MA 02180
Box Office: 781-279-2200
Administrative Office: 781-279-7885
boxoffice@greaterbostonstage.org
greaterbostonstage.org

GROUPS

Special discounts are available for groups of 10 or more. Groups are also invited to use the gallery for exclusive pre or post-show receptions. To schedule your next event, contact Paul Luther at 781-587-7912 or paul@greaterbostonstage.org.

AGE APPROPRIATENESS

We rarely suggest appropriate ages for our productions. We assume all children are different and that guardians are the best judges for what is appropriate. We are happy to provide as much information as possible to help make these decisions. If you have questions, please ask the Box Office.

ACCESSIBILITY



Greater Boston Stage Company is committed to making theatre accessible to everyone. Accessible Seating: Patrons with a wheelchair and/or oxygen tank, or requiring other assistance, should inform the Box Office in advance so that accessible seating can be reserved.



Assisted listening devices are available at the Box Office at no charge. These devices have been made possible by the generous support of Barile Family Funeral Homes.



Babes in arms are not permitted and a seat must be reserved for every guest. A limited number of booster seats are available at the Box Office.



Cost should not be a barrier to enjoying the arts! Information is available at the box office about the theatre's EBT Card to Culture, Frugal Friday, Savvy Saturdays, and 25 for \$25 discounts. The theatre is also pleased to offer scholarships & attendance support for education programs through Fund-A-Need.

GENERAL POLICIES

The use of cameras and recording devices in the theatre is strictly prohibited.

Please turn off all pagers, cellular phones, watch alarms, and other noisemaking equipment when in the theatre.

In consideration for performers and other audience members, all latecomers will be seated at the discretion of the management in order to minimize distractions in our intimate theatre space.

Greater Boston Stage Company reserves the right to ask any patron causing a disturbance to leave the premises without refund.

SEASON 26

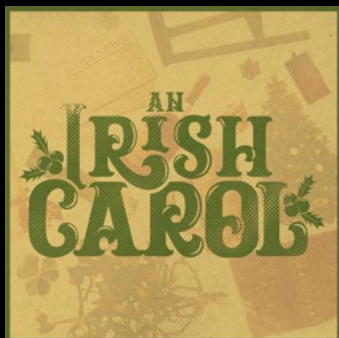
SUBSCRIPTIONS AND TICKETS NOW AVAILABLE



September 12-28, 2025



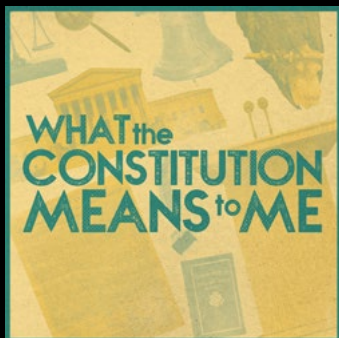
Oct. 24 - Nov. 9, 2025



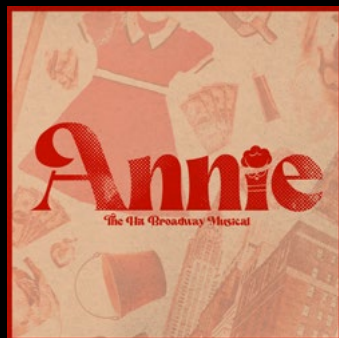
December 5-21, 2025



March 6-22, 2026



April 10-26, 2026



May 29 - June 28, 2026